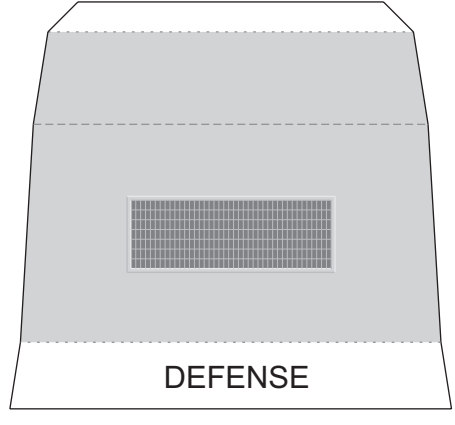
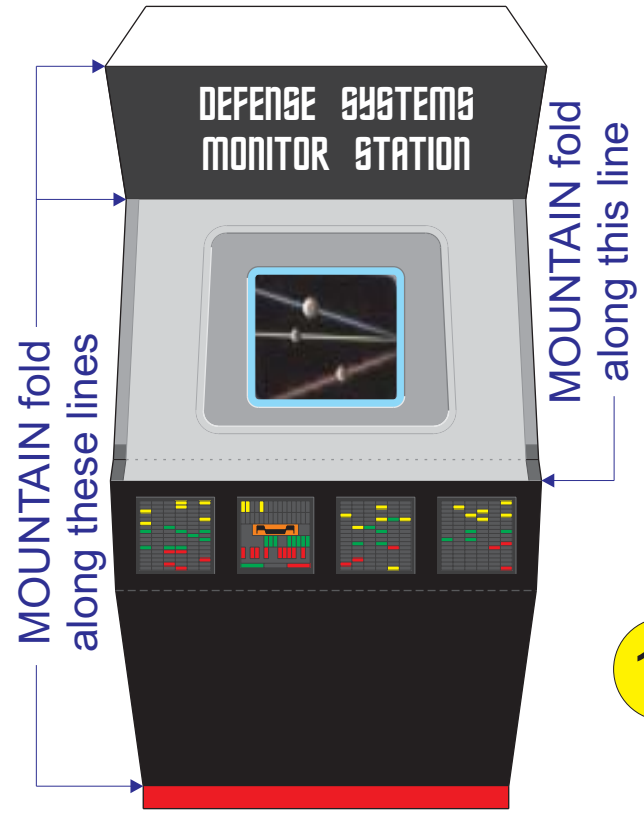


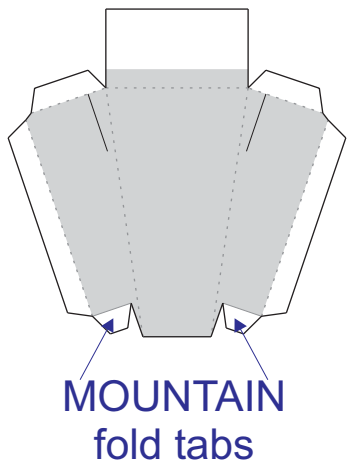
26 Defense Systems Monitor Station and Base



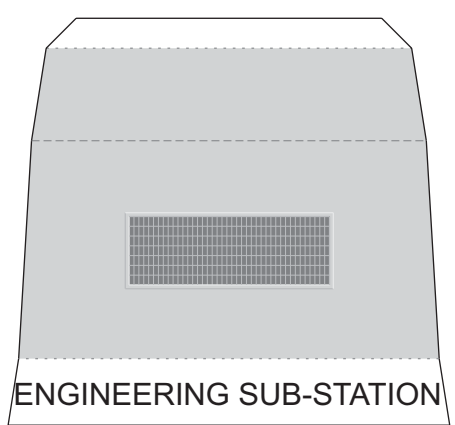
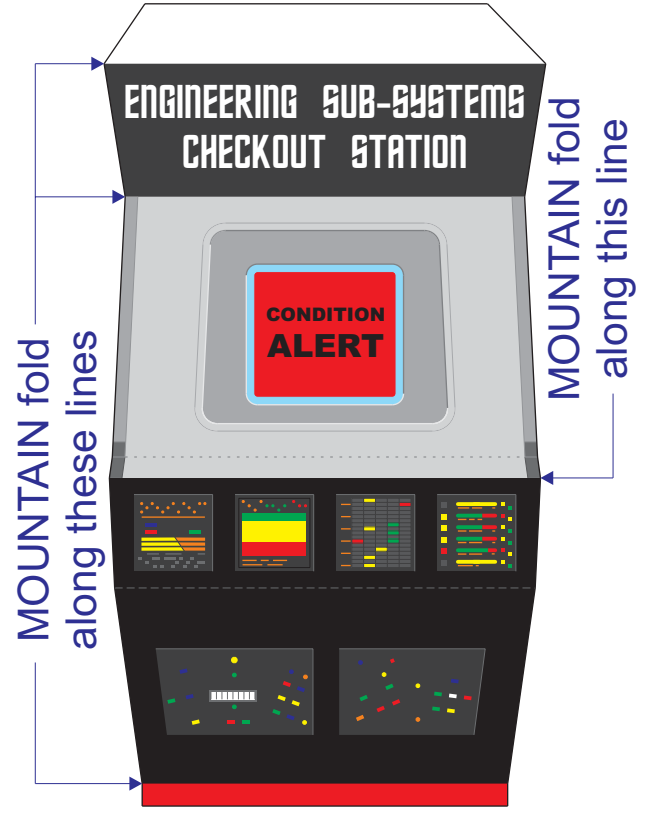
13 Red Alert Indicator



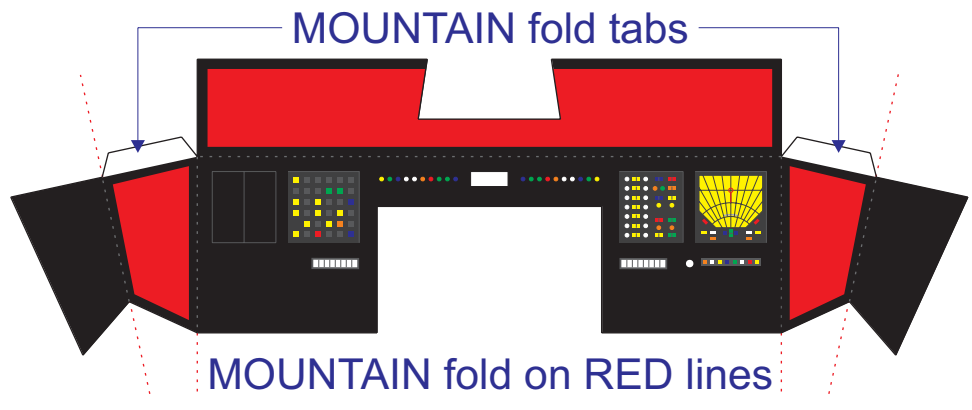
12 Helmsman & Navigator Station Front



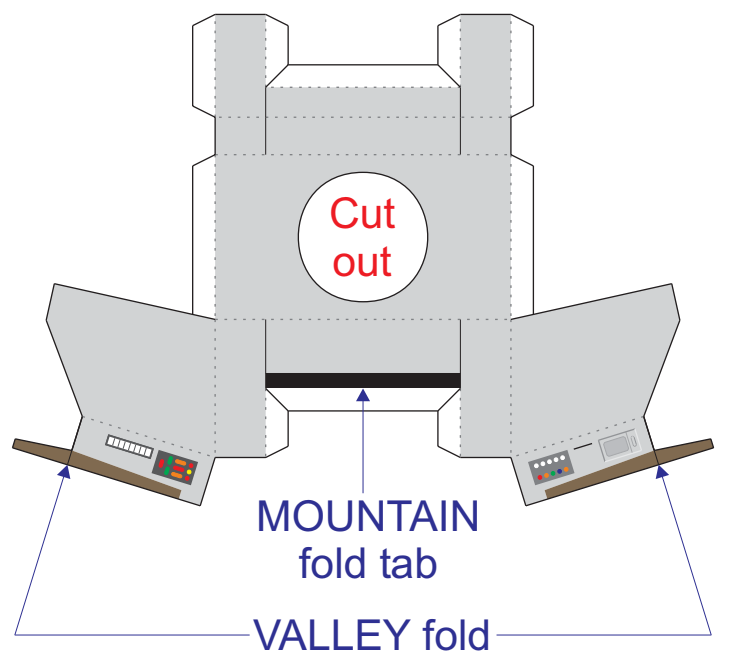
26 Engineering Sub-Systems Checkout Station and Base



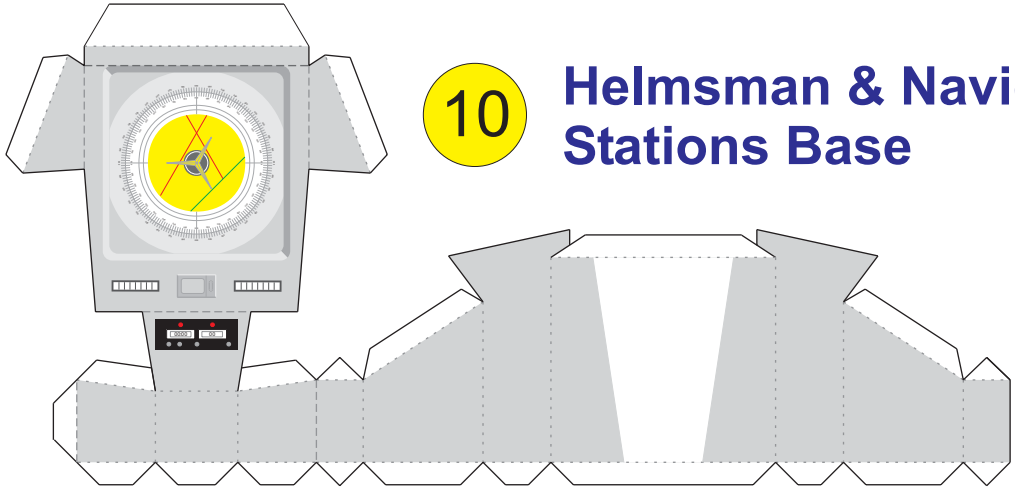
11 Helmsman & Navigator Stations Console



20 Commanders Chair



10 Helmsman & Navigator Stations Base



Special thanks to Alan Anderton (Kirok of L'Stok) for his invaluable assistance in locating reference material. Visit his website at: <http://trektoday.blogspot.com/>

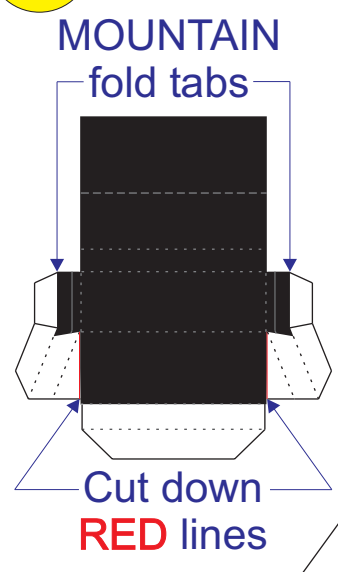


USS ENTERPRISE BRIDGE (NCC-1701)

Valley Fold
Mountain Fold

1:25 Scale Model design by Ron Caudillo (ronaldcaudillo@yahoo.com)

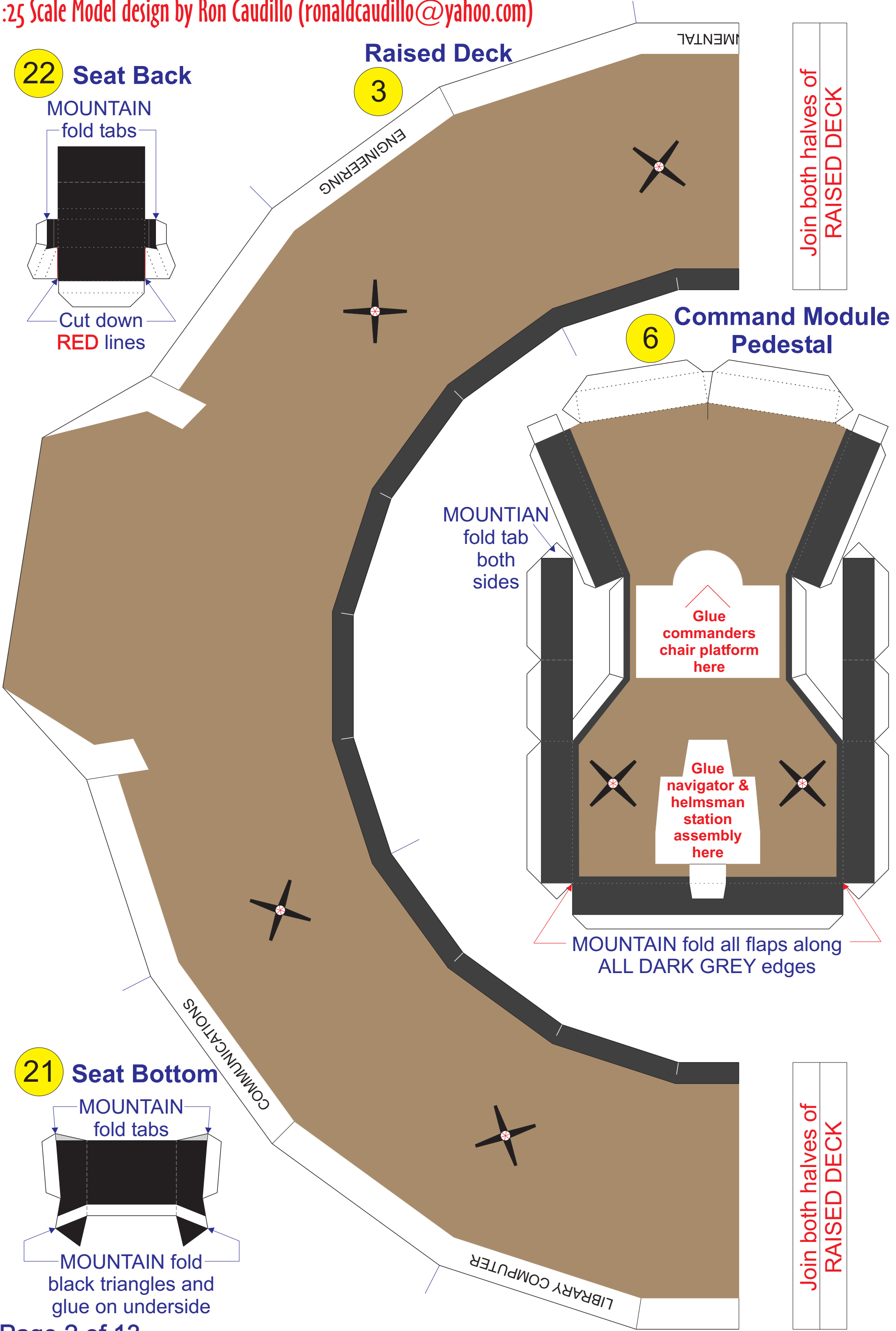
22 Seat Back



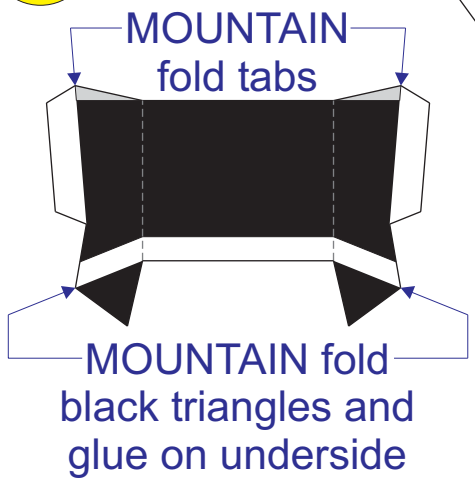
Raised Deck

3

Join both halves of
RAISED DECK



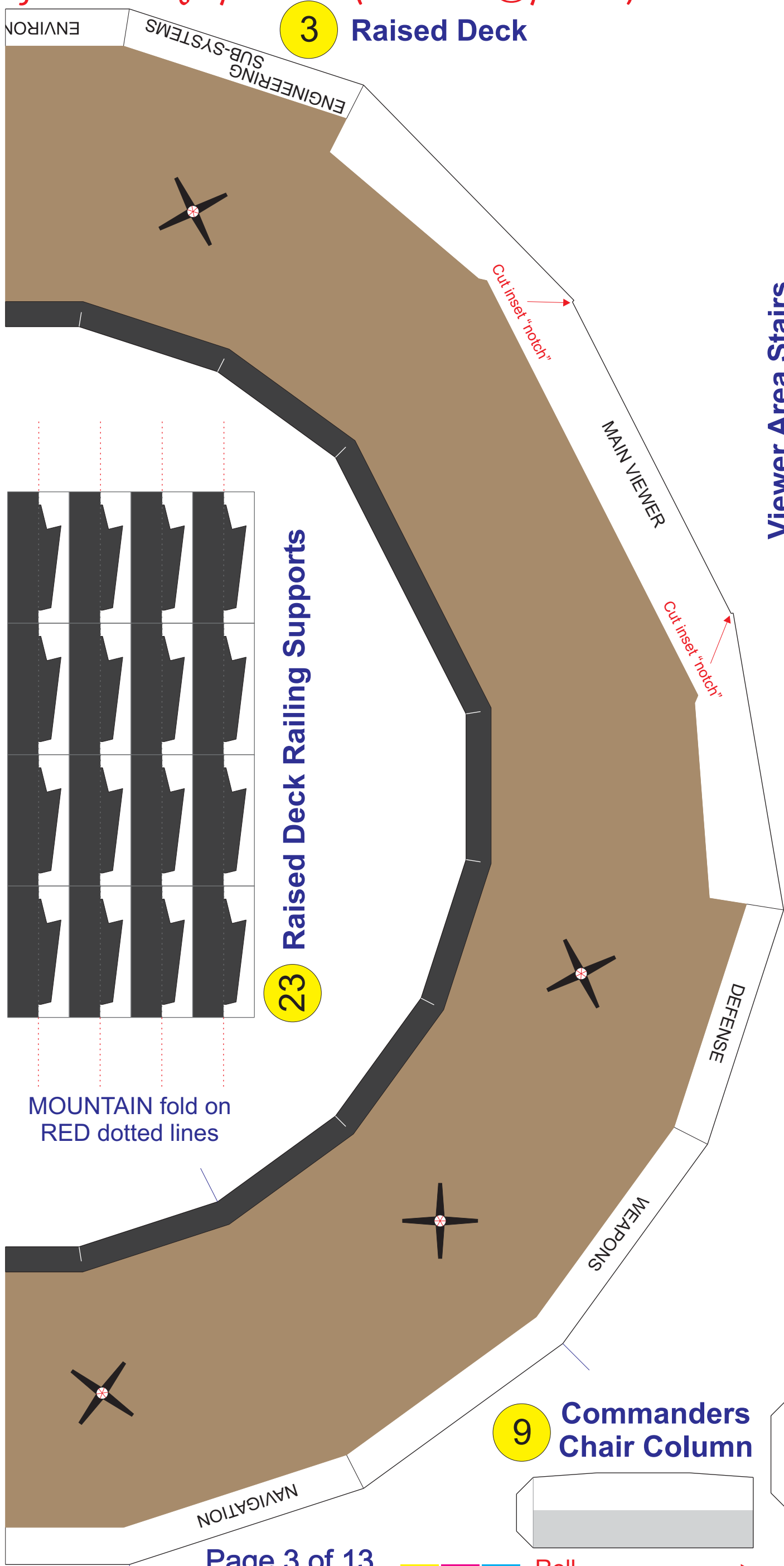
21 Seat Bottom



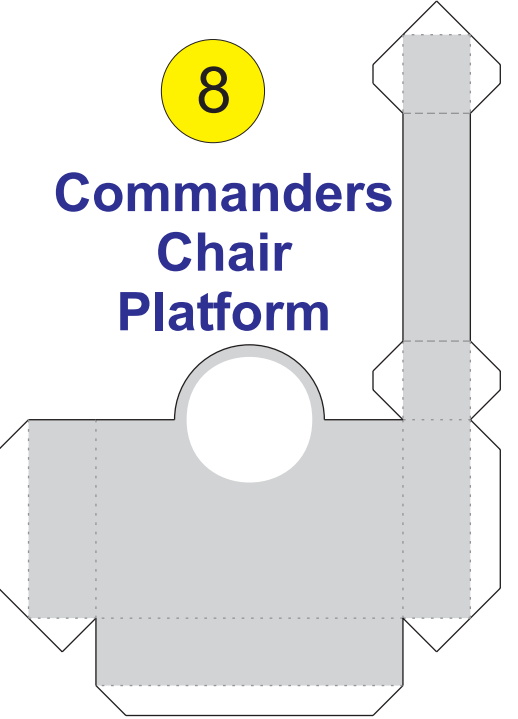
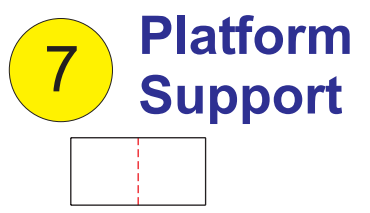
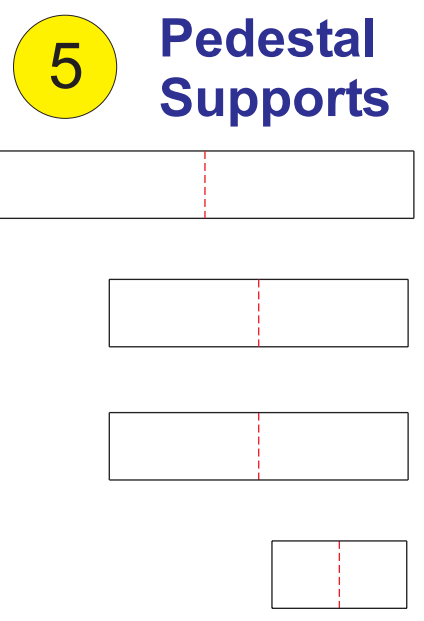
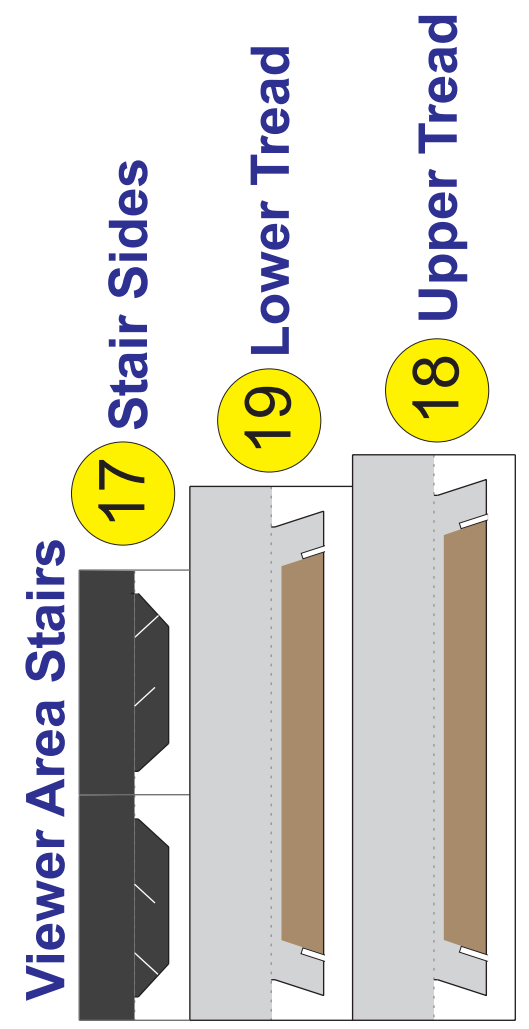
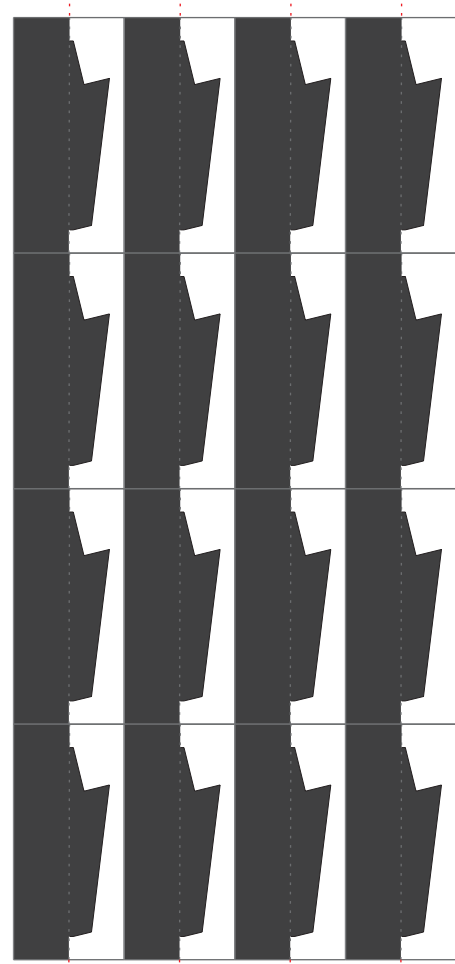
USS ENTERPRISE BRIDGE (NCC-1701)

Valley Fold
Mountain Fold

1:25 Scale Model design by Ron Caudillo (ronaldcaudillo@yahoo.com)



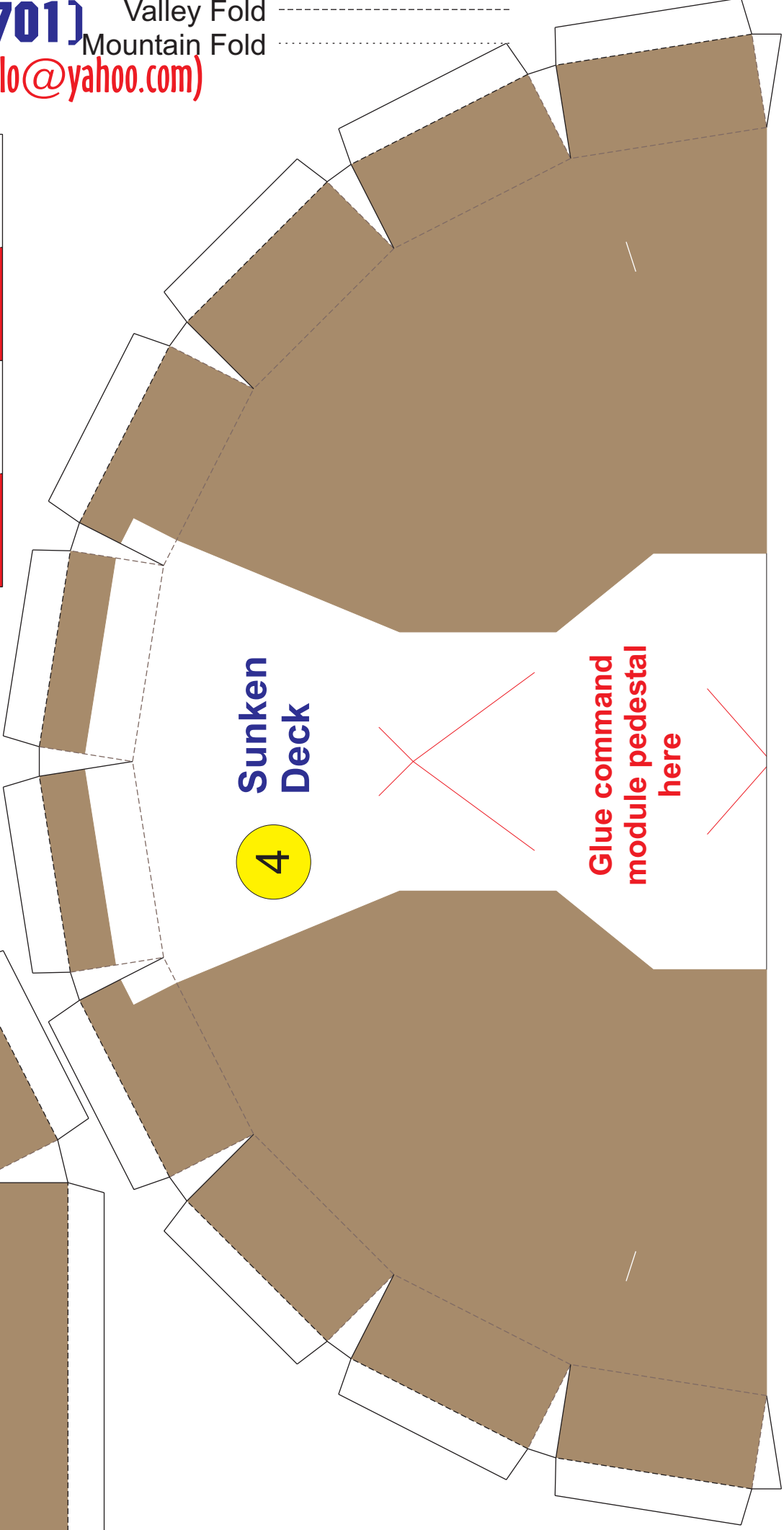
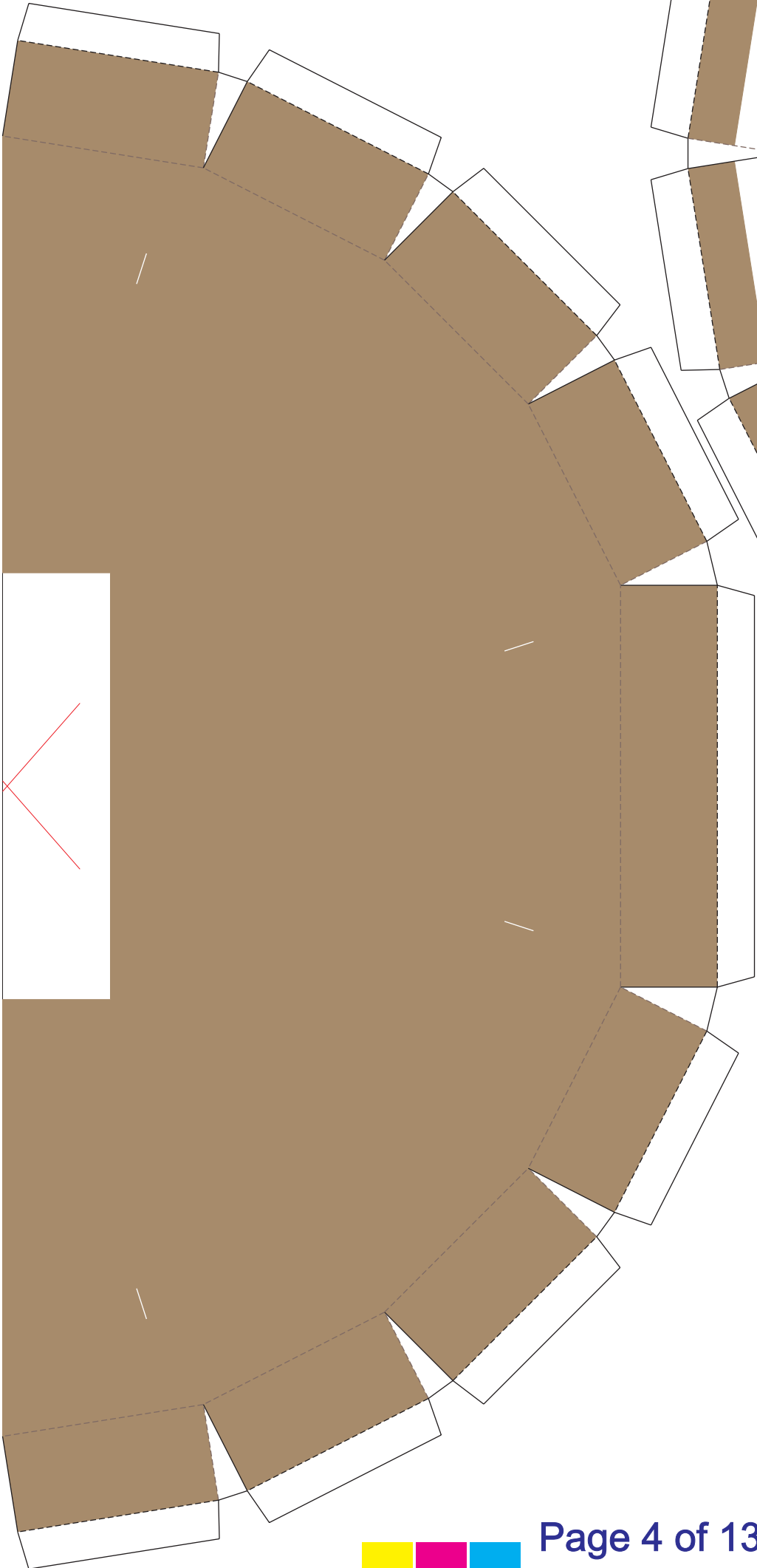
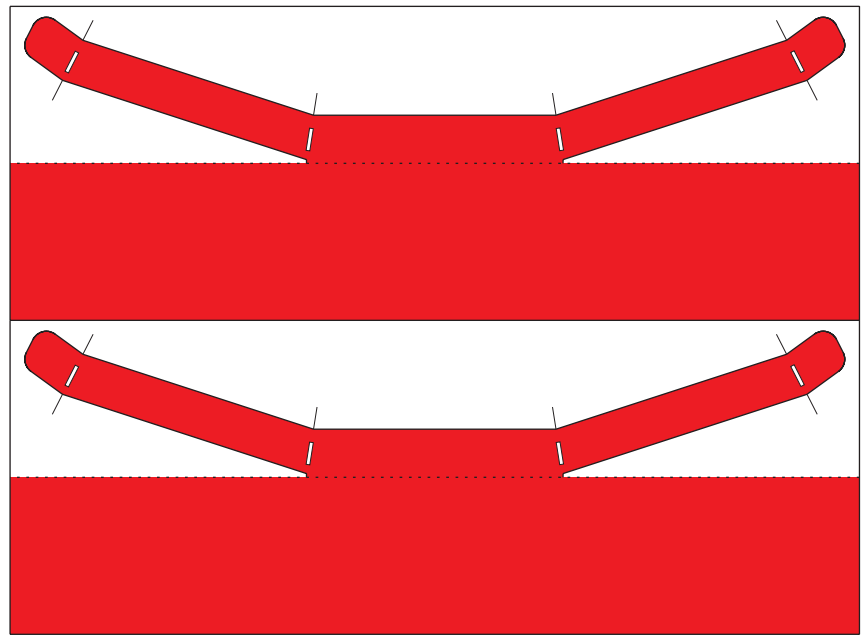
23 Raised Deck Railing Supports



USS ENTERPRISE BRIDGE (NCC-1701)

1:25 Scale Model design by Ron Caudillo (ronaldcaudillo@yahoo.com)

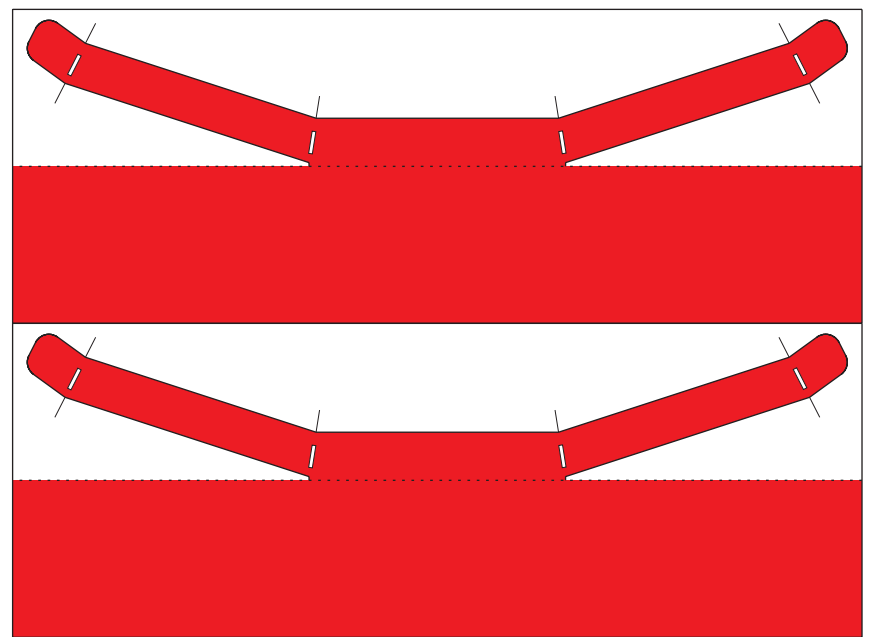
Valley Fold
Mountain Fold



Sunken Deck
4

Glue command module pedestal here

24 Raised Deck Railing



USS ENTERPRISE BRIDGE (NCC-1701)

1:25 Scale Model design by Ron Caudillo (ronaldcaudillo@yahoo.com)

Valley Fold

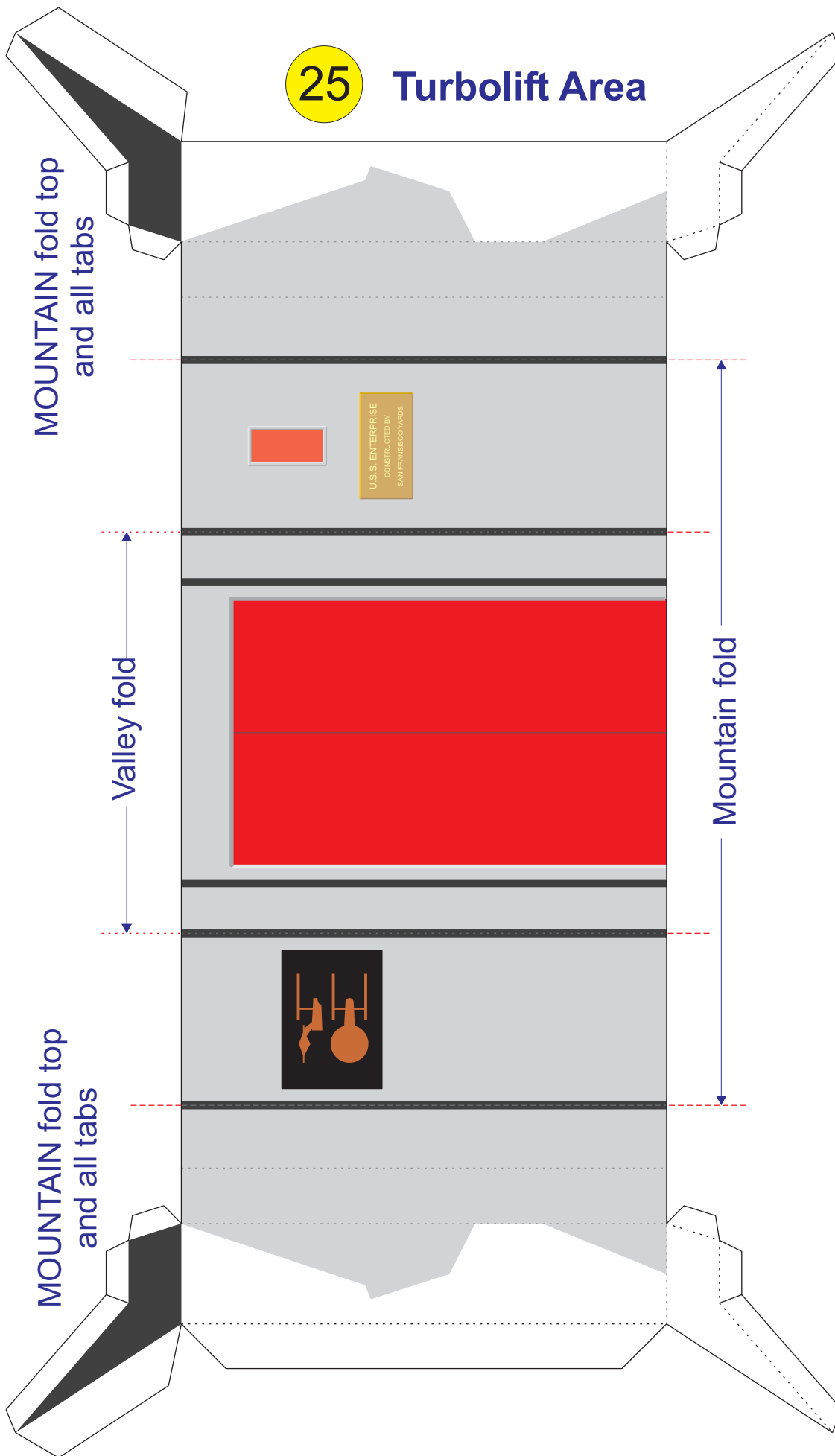
Mountain Fold

Bridge Deck
Inside Edge

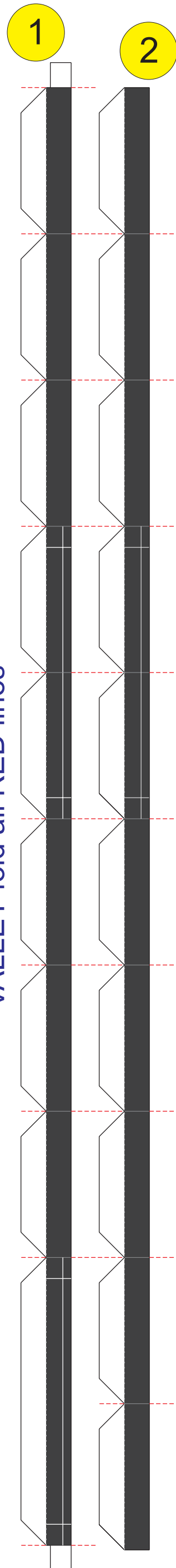
Centimeters

Centimeters

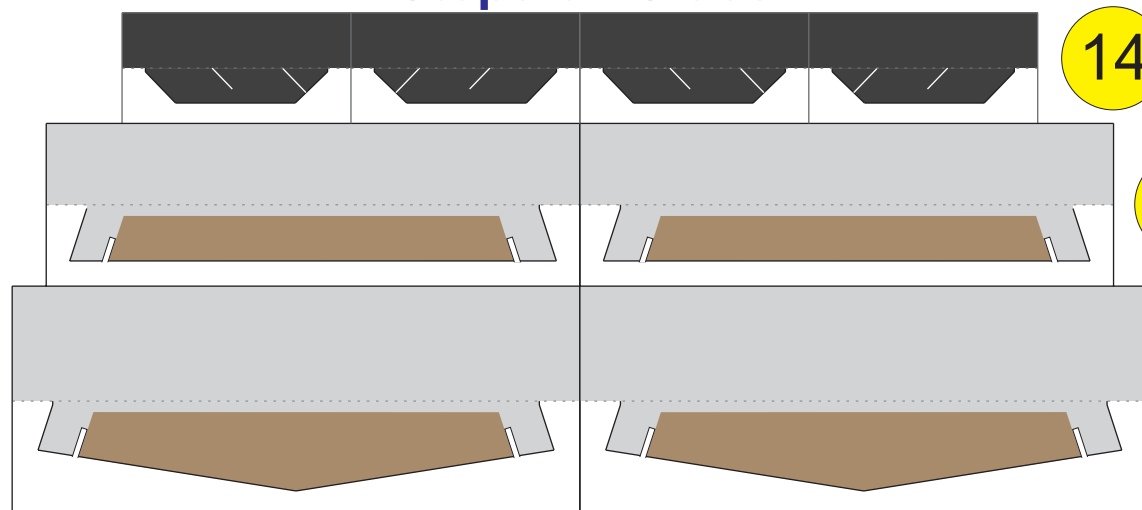
Join both halves of
SUNKEN DECK



VALLEY fold all RED lines



Steps on Sides



Inches

Inches



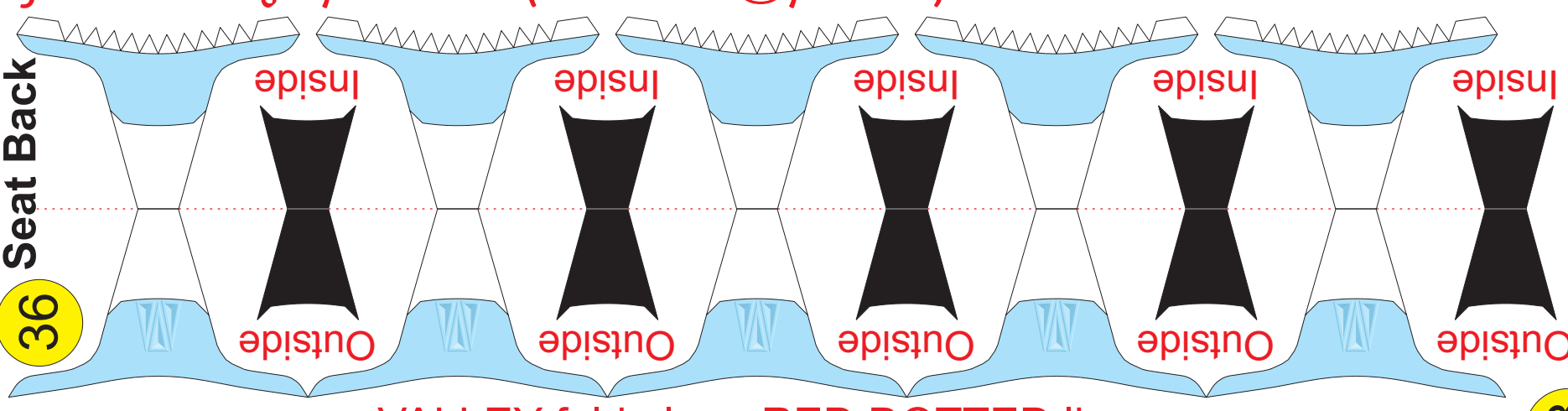
USS ENTERPRISE BRIDGE (NCC-1701)

Valley Fold
Mountain Fold

1:25 Scale Model design by Ron Caudillo (ronaldcaudillo@yahoo.com)

Seat Back

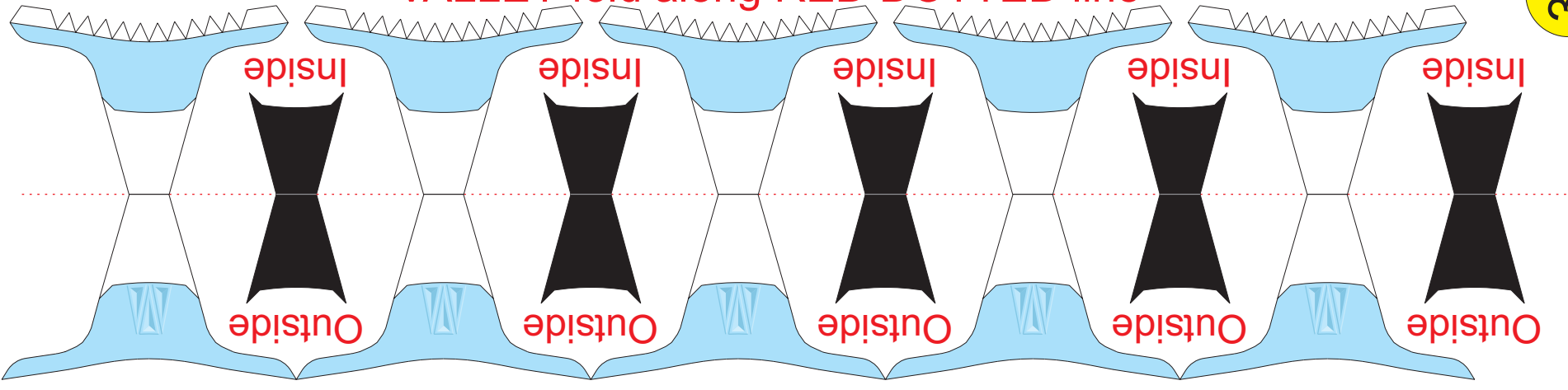
36



Padding

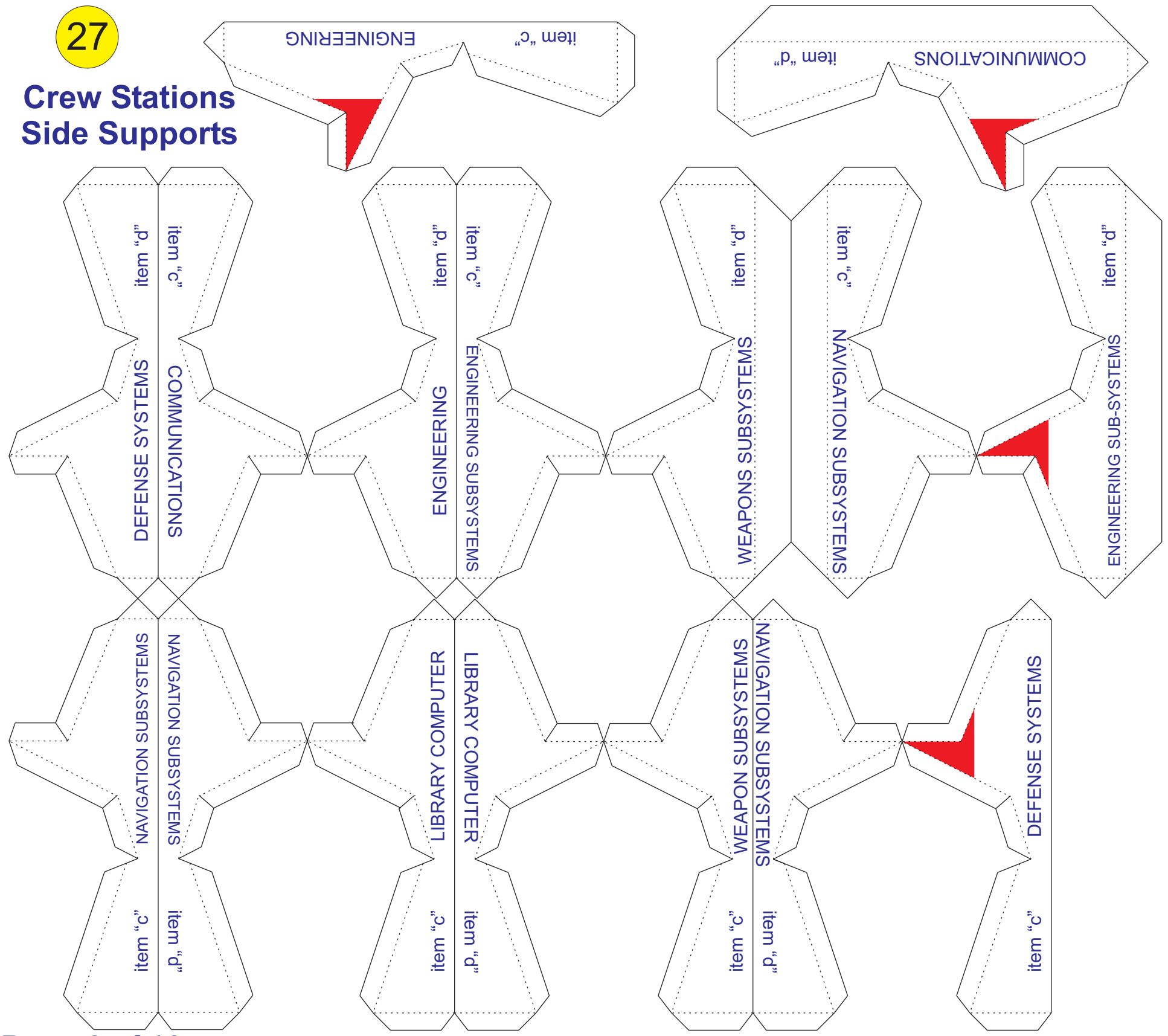
38

VALLEY fold along RED DOTTED line



27

Crew Stations Side Supports



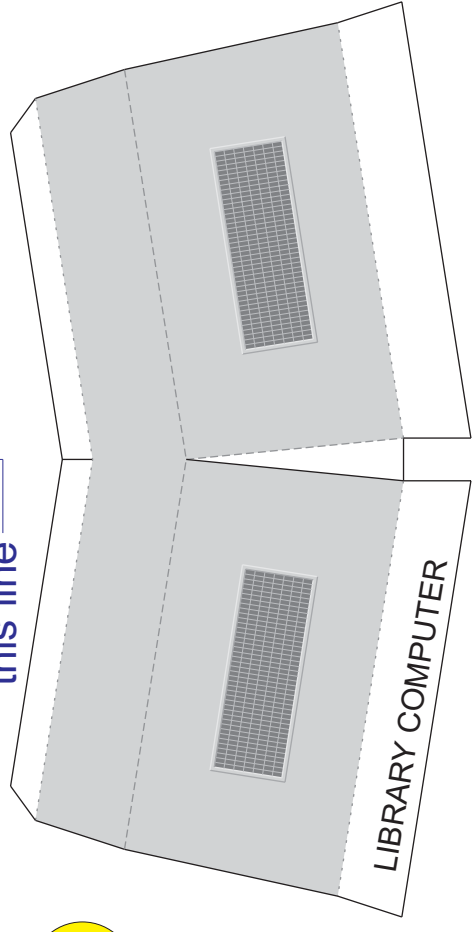
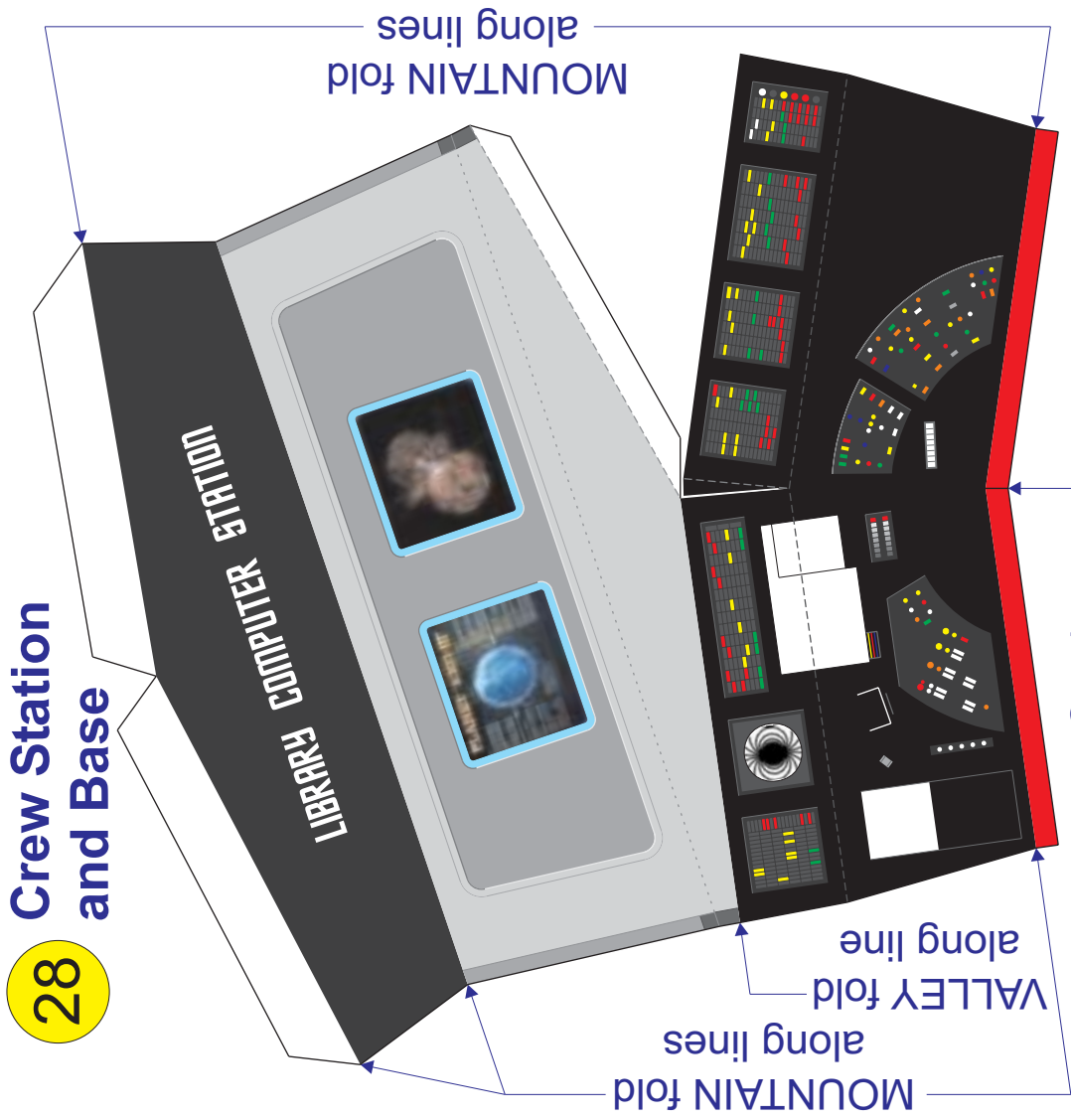
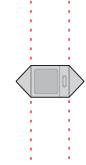
USS ENTERPRISE BRIDGE (NCC-1701)

Valley Fold
Mountain Fold

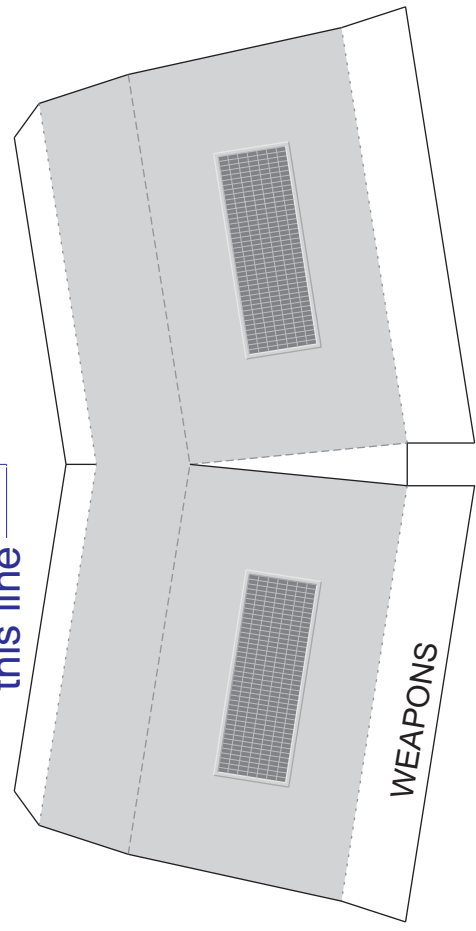
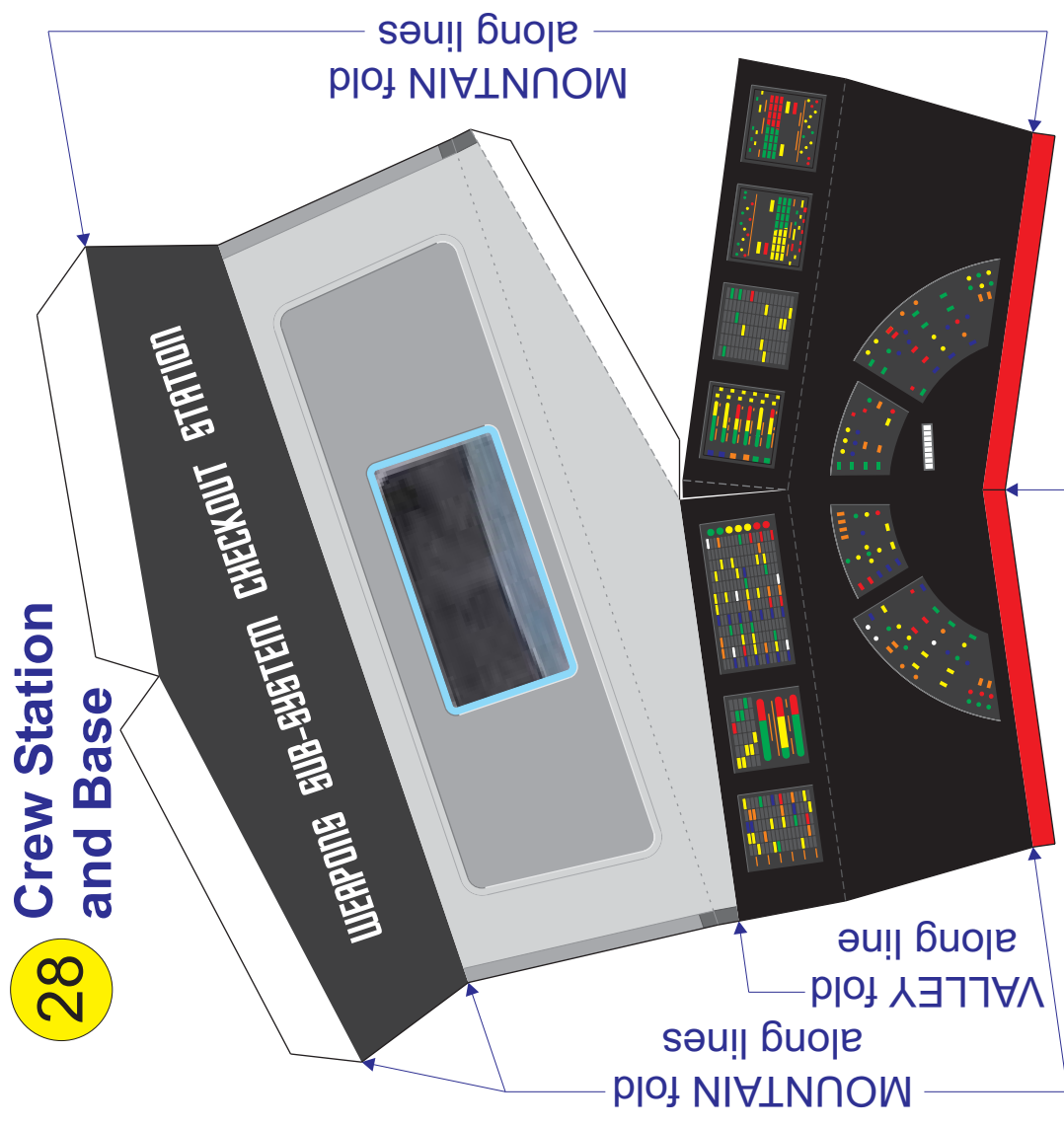
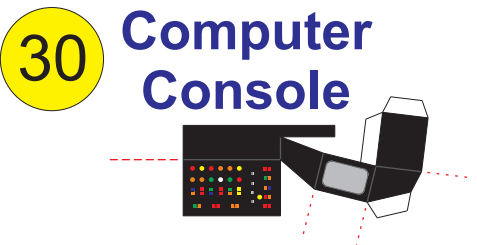
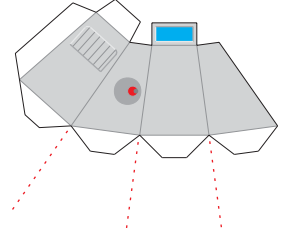
1:25 Scale Model design by Ron Caudillo (ronaldcaudillo@yahoo.com)

31

Intercomm



29 Viewer



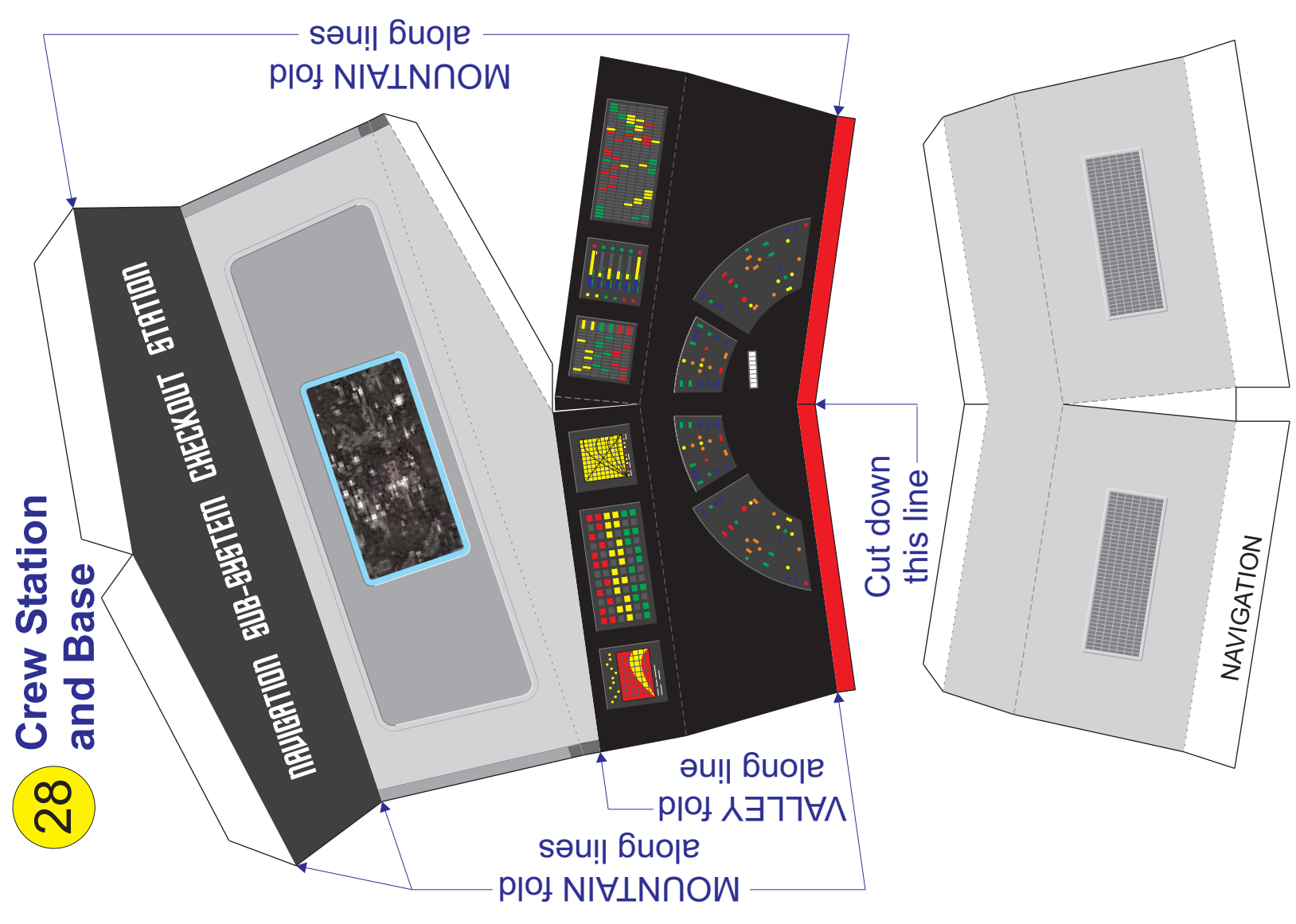
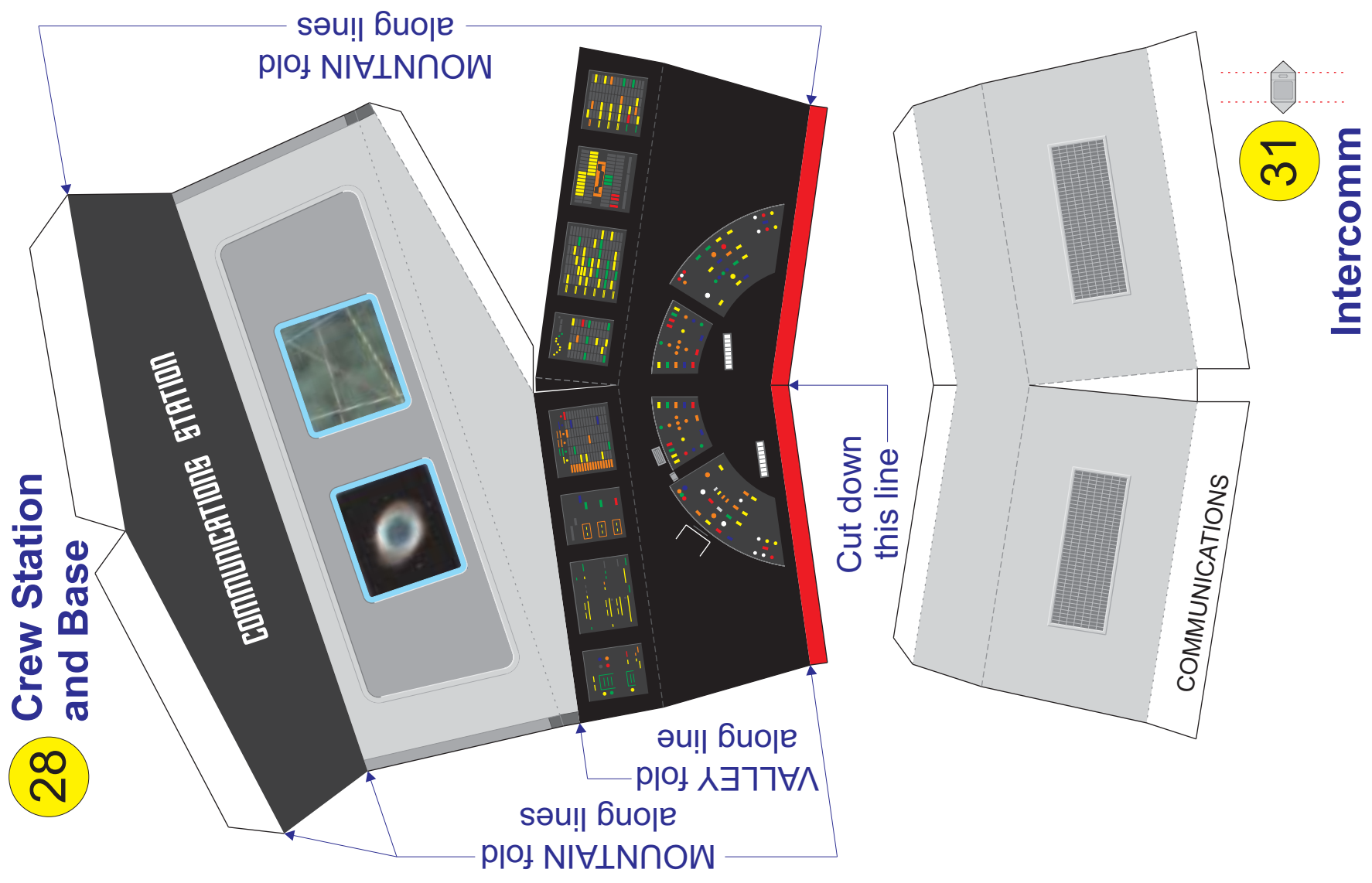
28



USS ENTERPRISE BRIDGE (NCC-1701)

Valley Fold
Mountain Fold

1:25 Scale Model design by Ron Caudillo (ronaldcaudillo@yahoo.com)



USS ENTERPRISE BRIDGE (NCC-1701)

Valley Fold
Mountain Fold

1:25 Scale Model design by Ron Caudillo (ronaldcaudillo@yahoo.com)

28 Crew Station and Base

28 Crew Station and Base

31

Intercomm

29

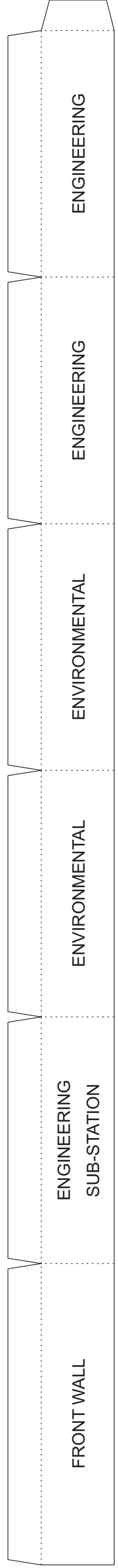
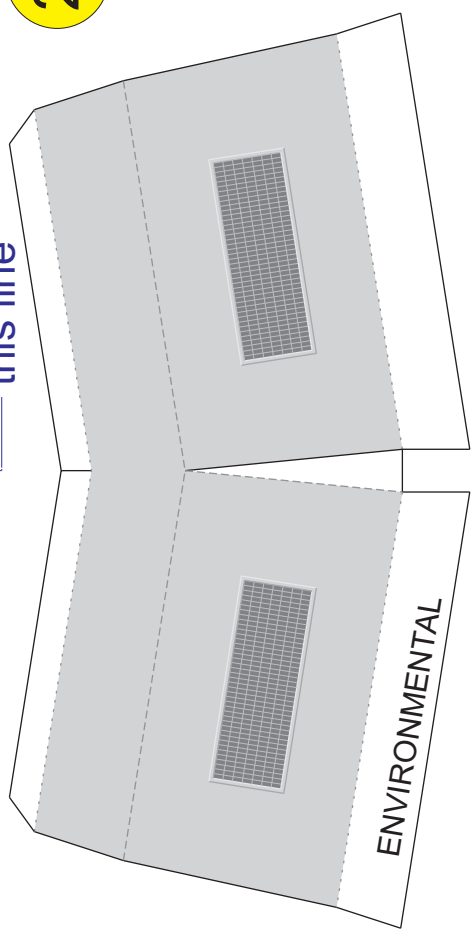
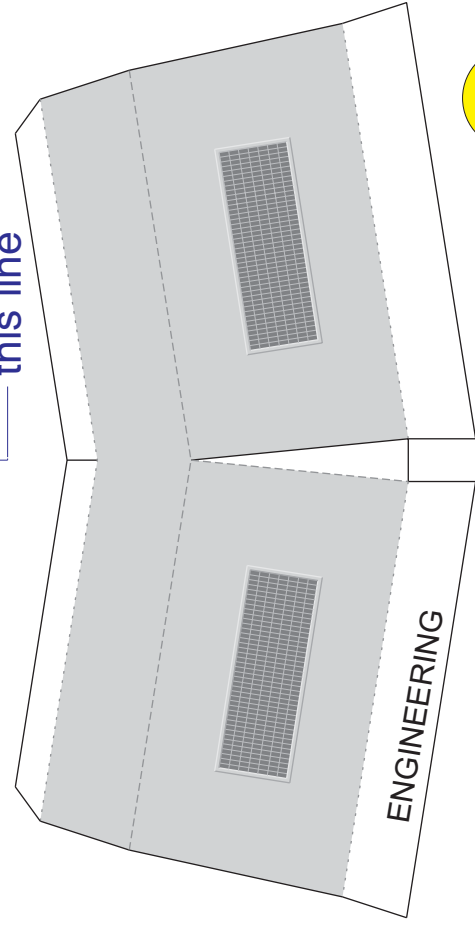
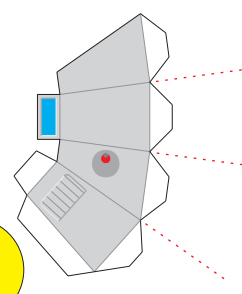
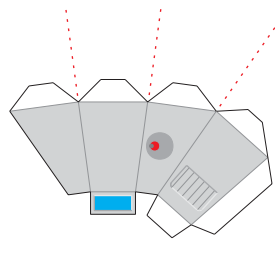
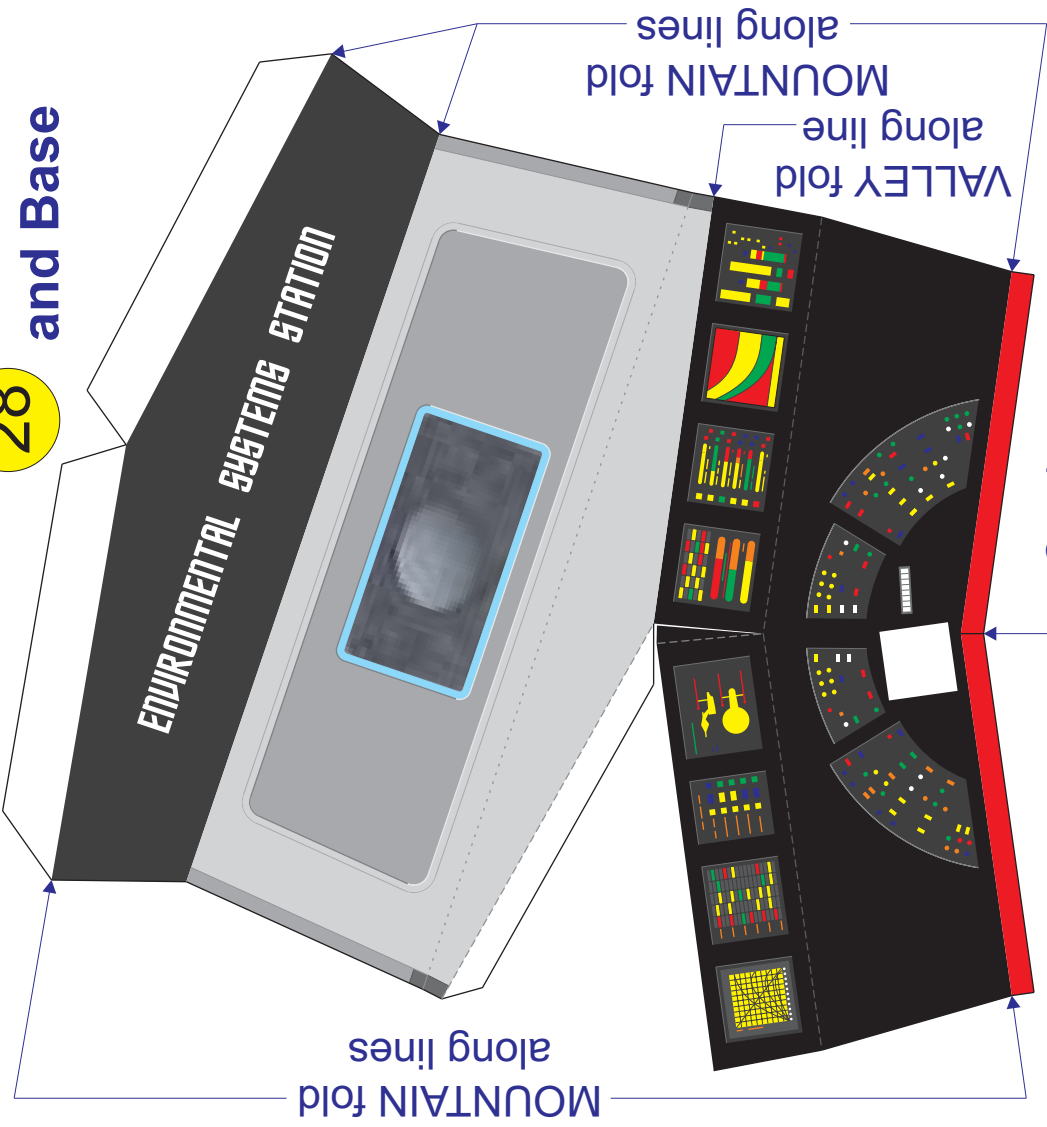
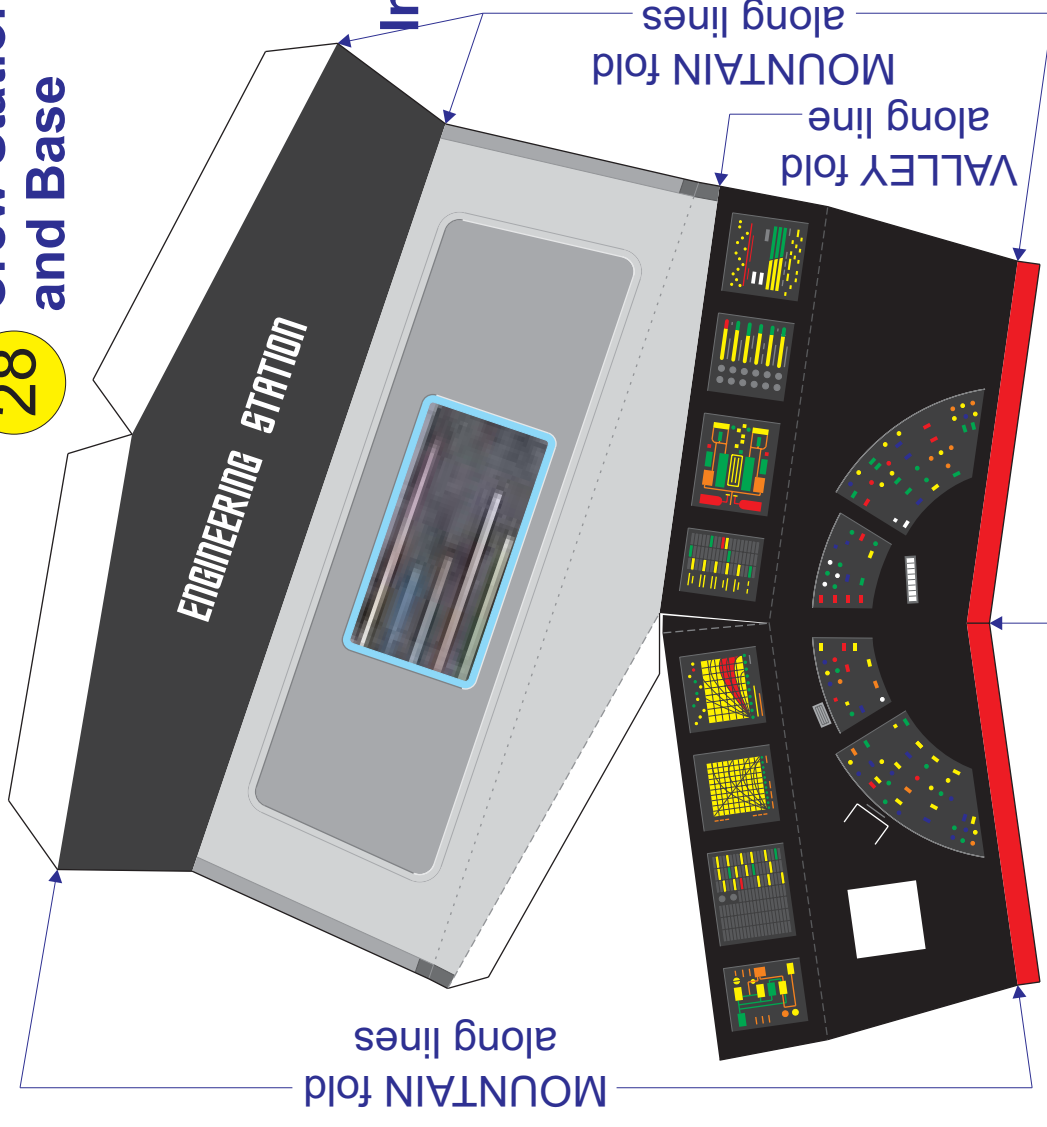
Viewer

29

Viewer

42

42 DECK EDGE SUPPORT



USS ENTERPRISE BRIDGE (NCC-1701)

Valley Fold
Mountain Fold

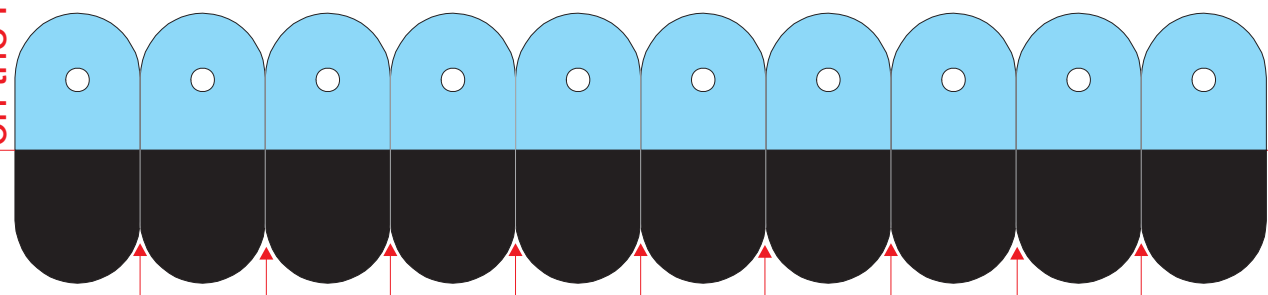
1:25 Scale Model design by Ron Caudillo (ronaldcaudillo@yahoo.com)

41

DECK EDGE SUPPORT

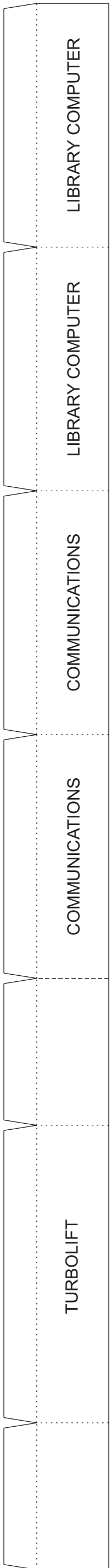
VALLEY fold on the RED line

37 Chair Seat

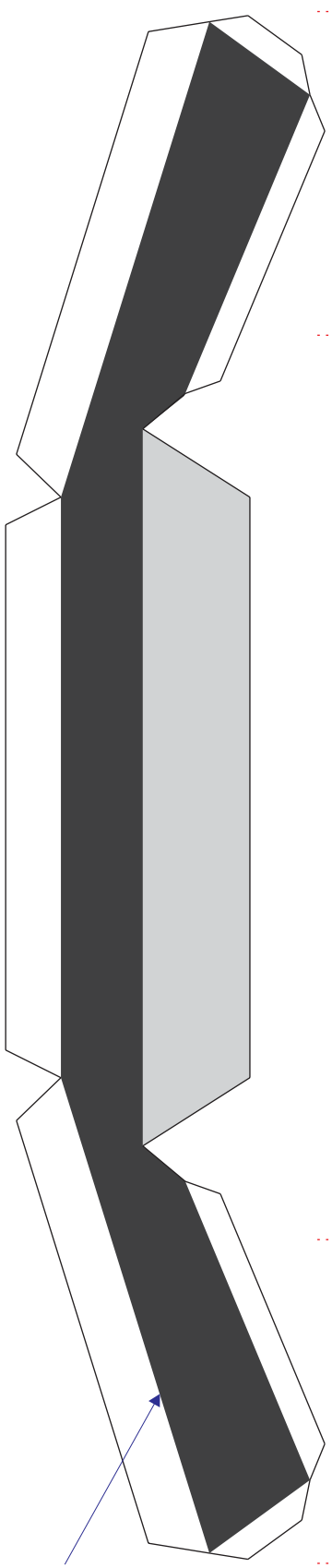


Cut out the WHITE circles

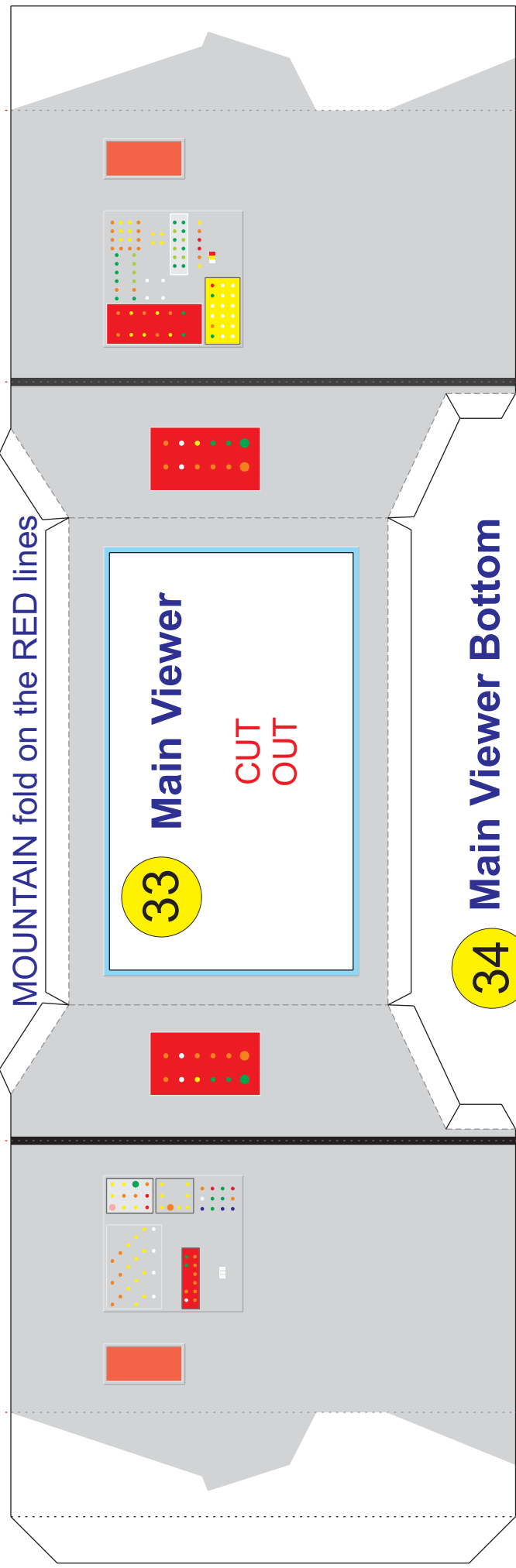
Cut apart



32 Main Viewer Top



MOUNTAIN fold along all dark grey edges

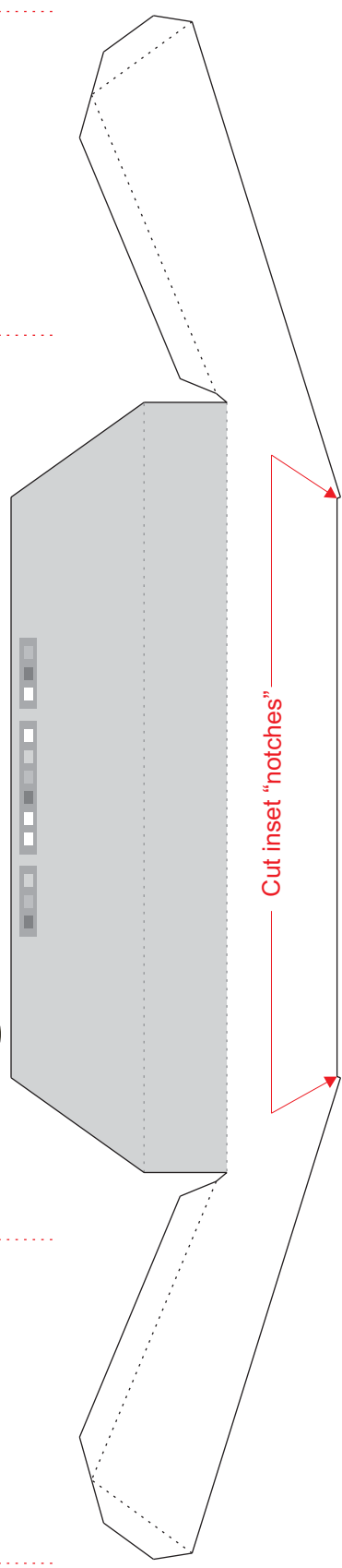


MOUNTAIN fold on the RED lines

33 Main Viewer

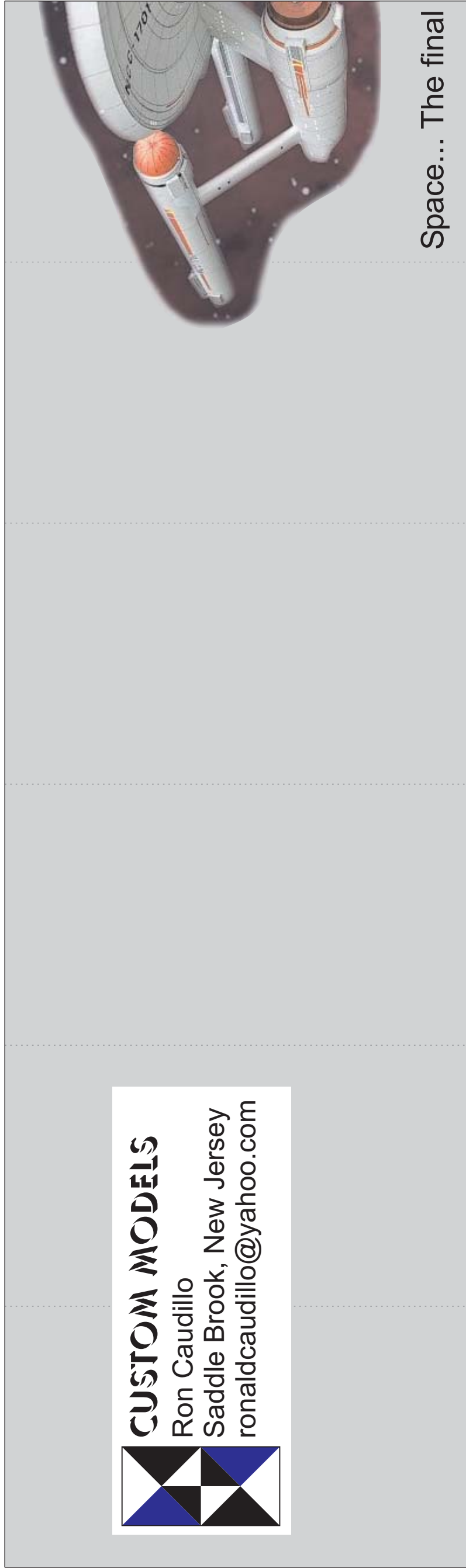
CUT OUT

34 Main Viewer Bottom



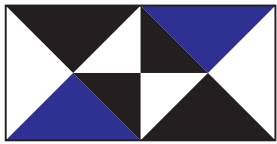
Cut inset "notches"





CUSTOM MODELS

Ron Caudillo
Saddle Brook, New Jersey
ronaldcaudillo@yahoo.com



Space... The final

NAVIGATION

NAVIGATION

LIBRARY COMPUTER

LIBRARY COMPUTER

COMMUNICATIONS

COMMUNICATIONS

45

Outer Wrap

44

Outer Wrap



STAR TREK

**USS ENTERPRISE
BRIDGE**

*Model design by
Ron Caudillo*

e. Its five year mission: to explore strange, new worlds. To seek out new

Glue to other piece 42

MAIN VIEWING SCREEN

35

Main Viewer Display

Fold white tabs UP
and glue to rear of
main viewer cutout



**STAR
TREK**



USS ENTERPRISE BRIDGE (NCC-1701)

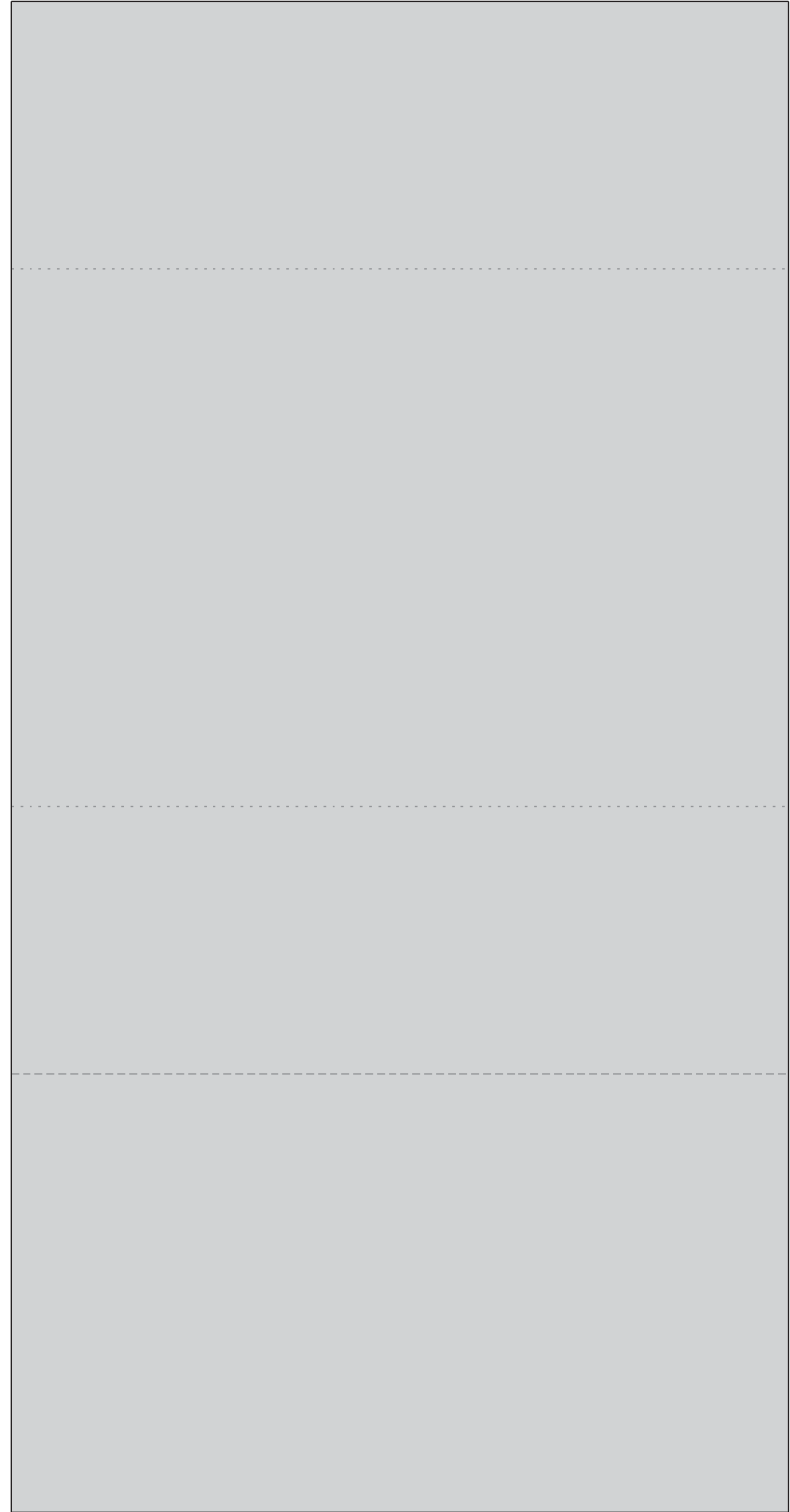
Valley Fold
Mountain Fold

1:25 Scale Model design by Ron Caudillo (ronaldcaudillo@yahoo.com)

44 Outer Wrap

43 Outer Wrap

Glue other part 44 to this edge



Glue other part 43 to this edge

43 Outer Wrap



Print this page on normal BOND TYPING PAPER

39 Chair Post



Glue the BLACK end of each rolled section to the bottom of each seat bottom of the assembled chair. Let dry, glue and insert each seat assembly into a hole cut into the floor at each crew station.

