

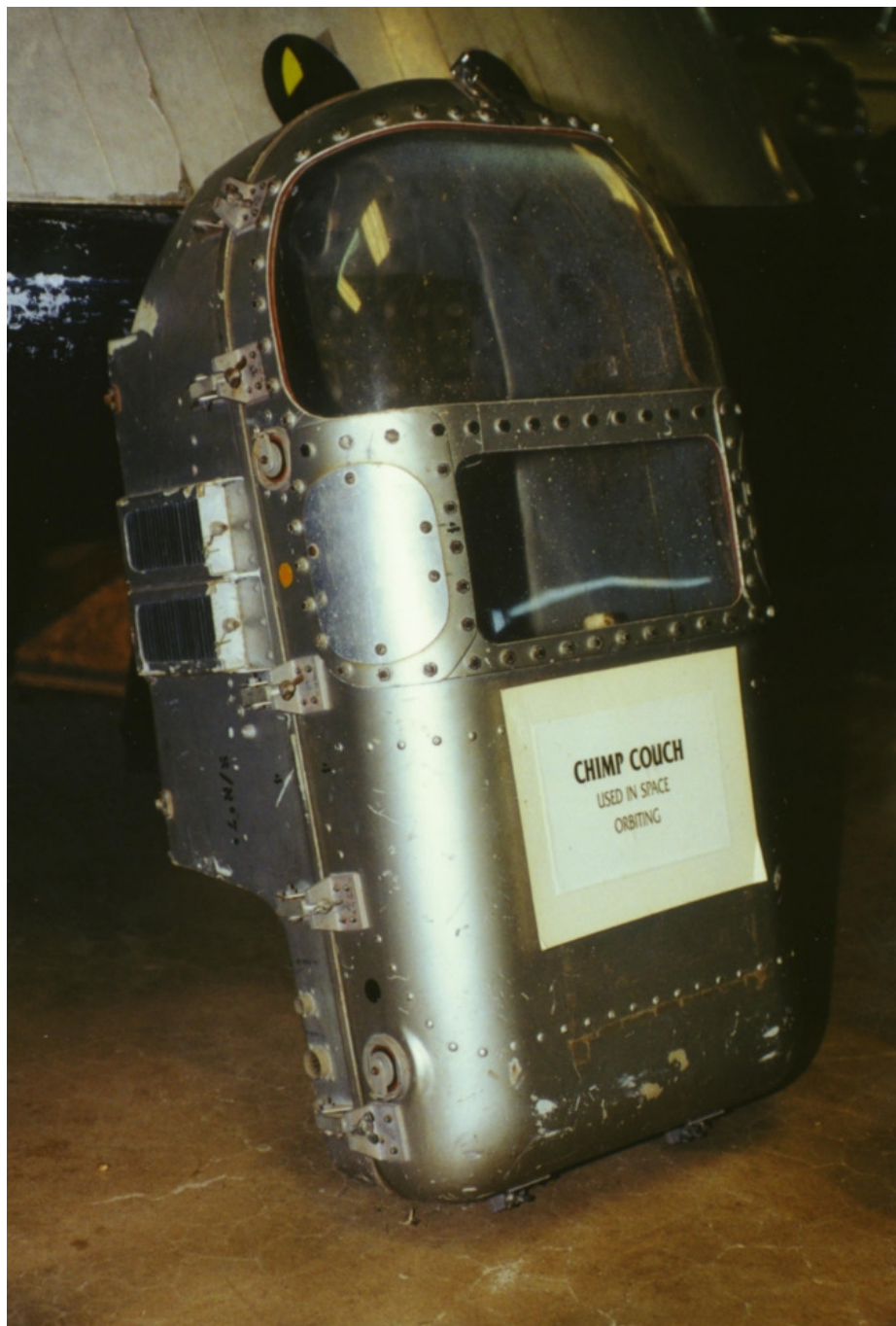
CHIMP COUCH

VERSION 1

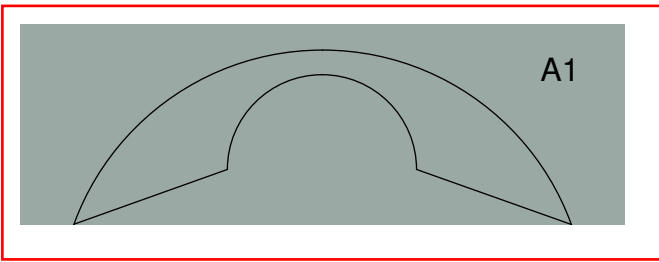
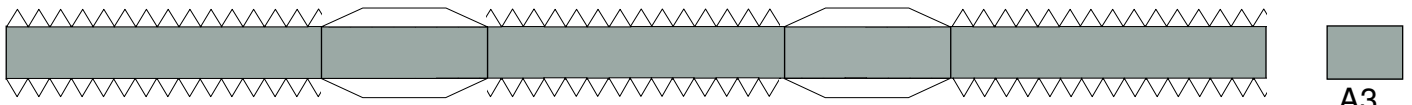
Pate Museum of Transportation, Cresson, Texas

PROJECT MERCURY

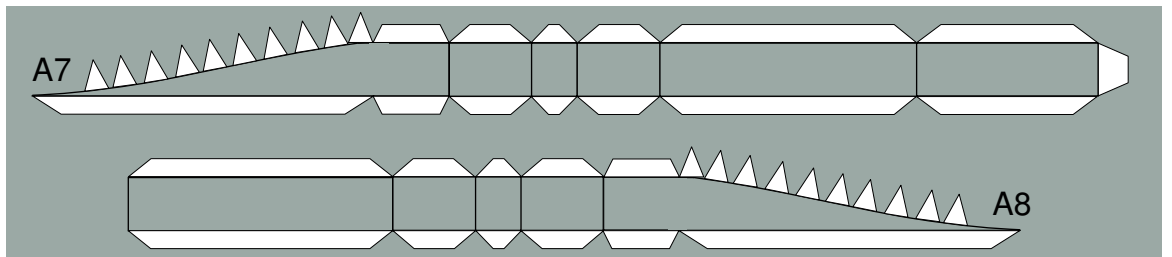
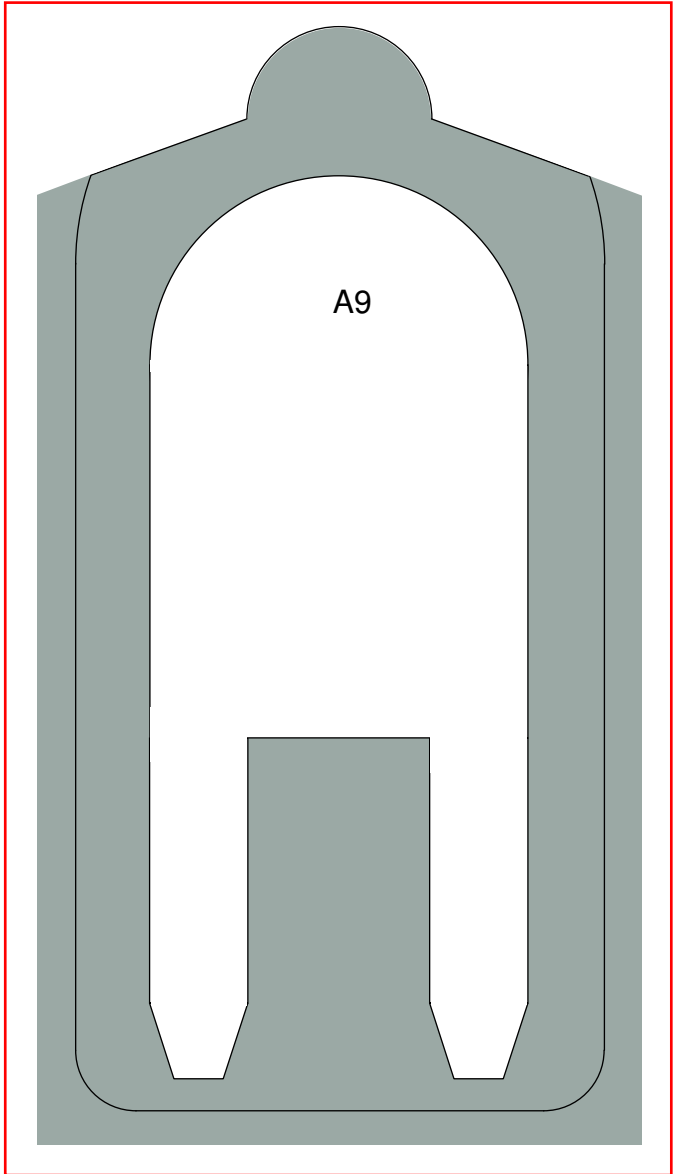
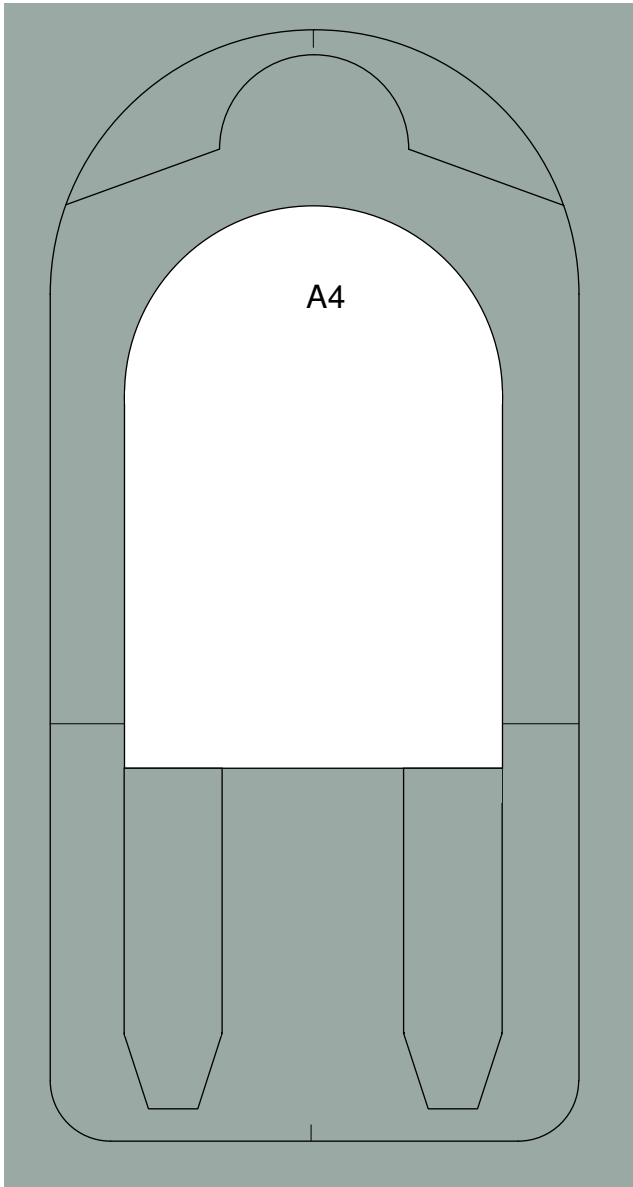
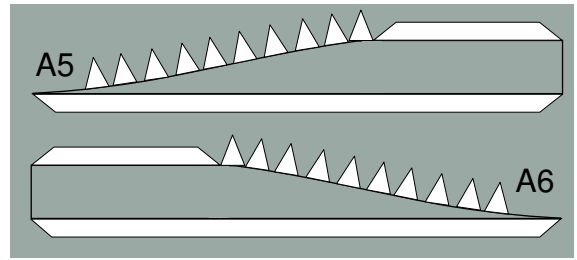
Card Model



G. Buchmayer © 2007



A2



print on 160g paper glue to cardstock

1 cm

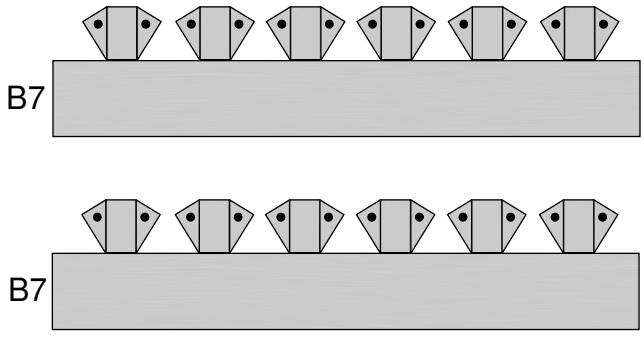
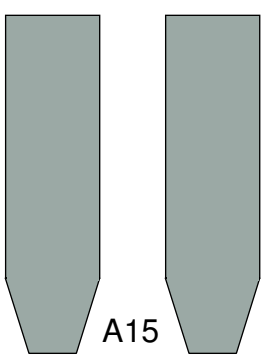
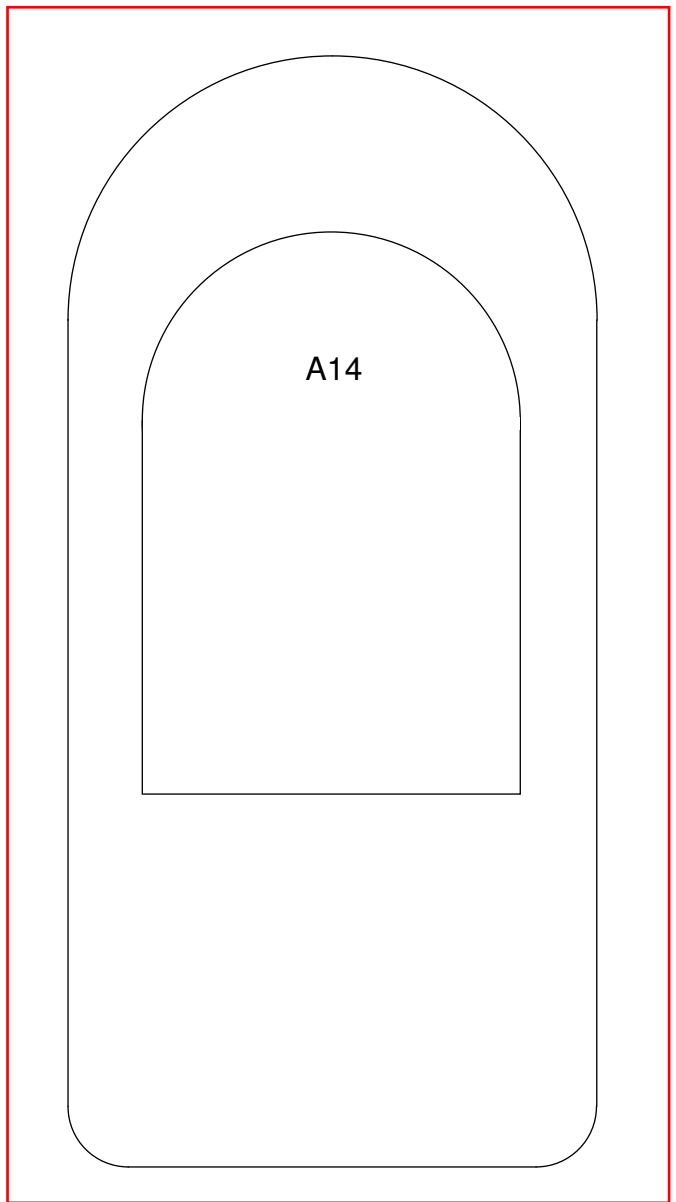
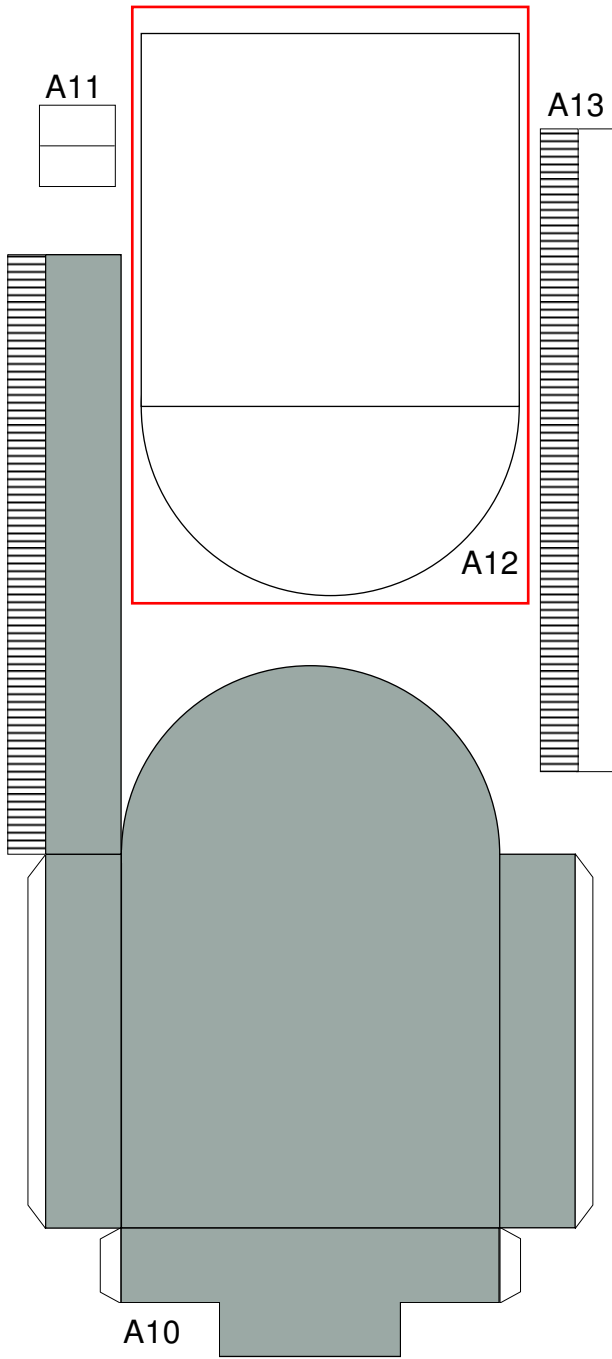
1 inch

CHIMP COUCH v.1 - PROJECT MERCURY

G. Buchmayer © 2007

page 2





print on 160g paper glue to cardstock

1 cm

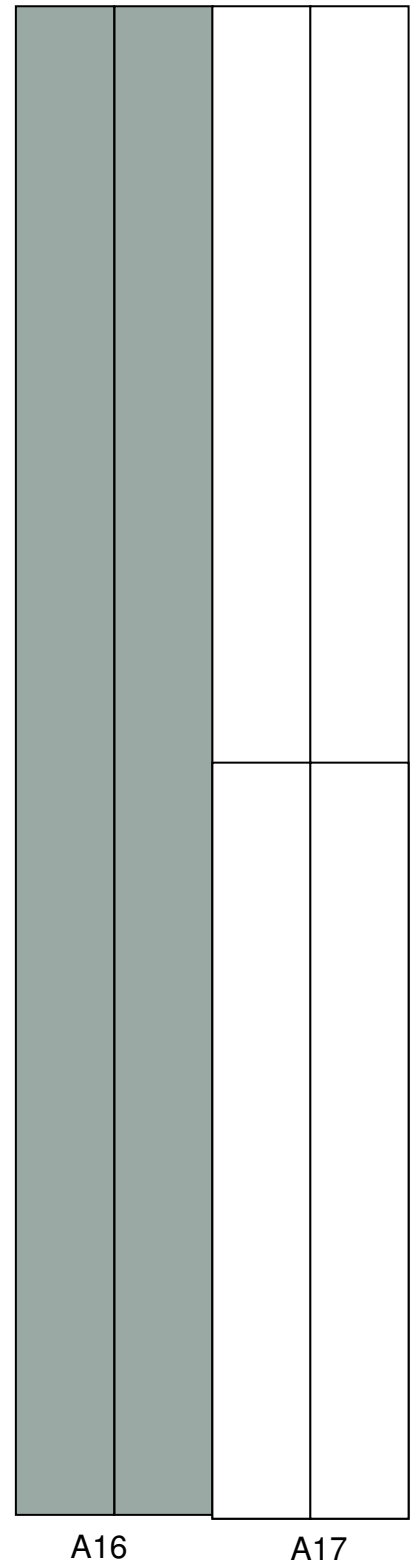
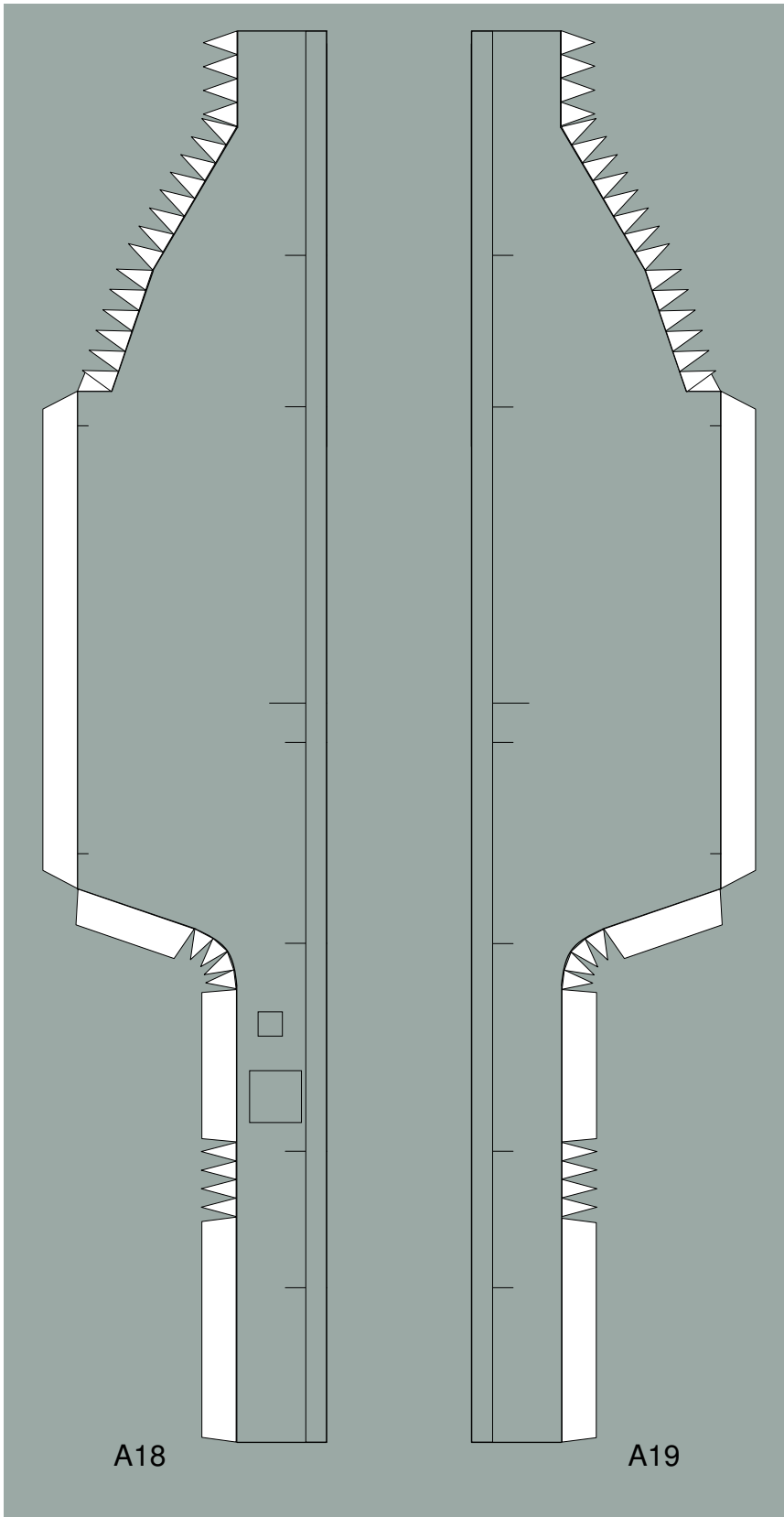
1 inch

CHIMP COUCH v.1 - PROJECT MERCURY

G. Buchmayer © 2007

page 3





print on 160g paper glue to cardstock

1 cm

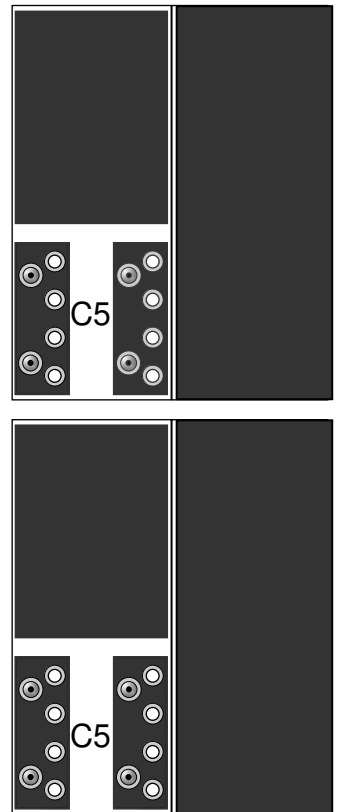
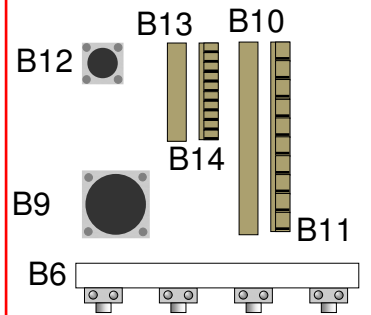
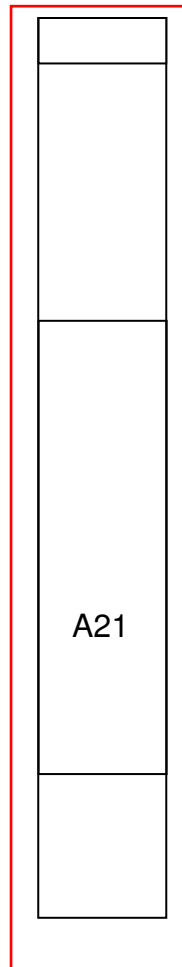
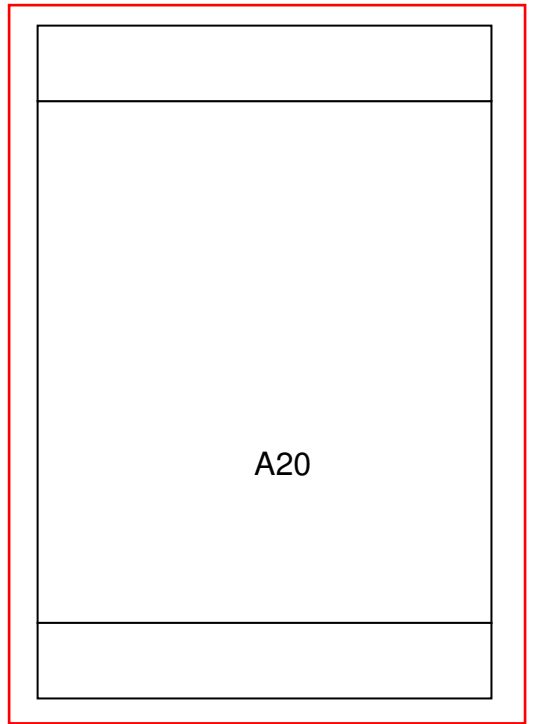
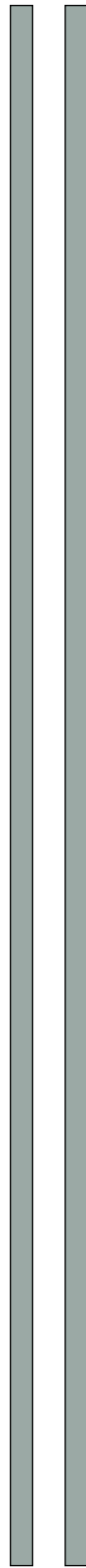
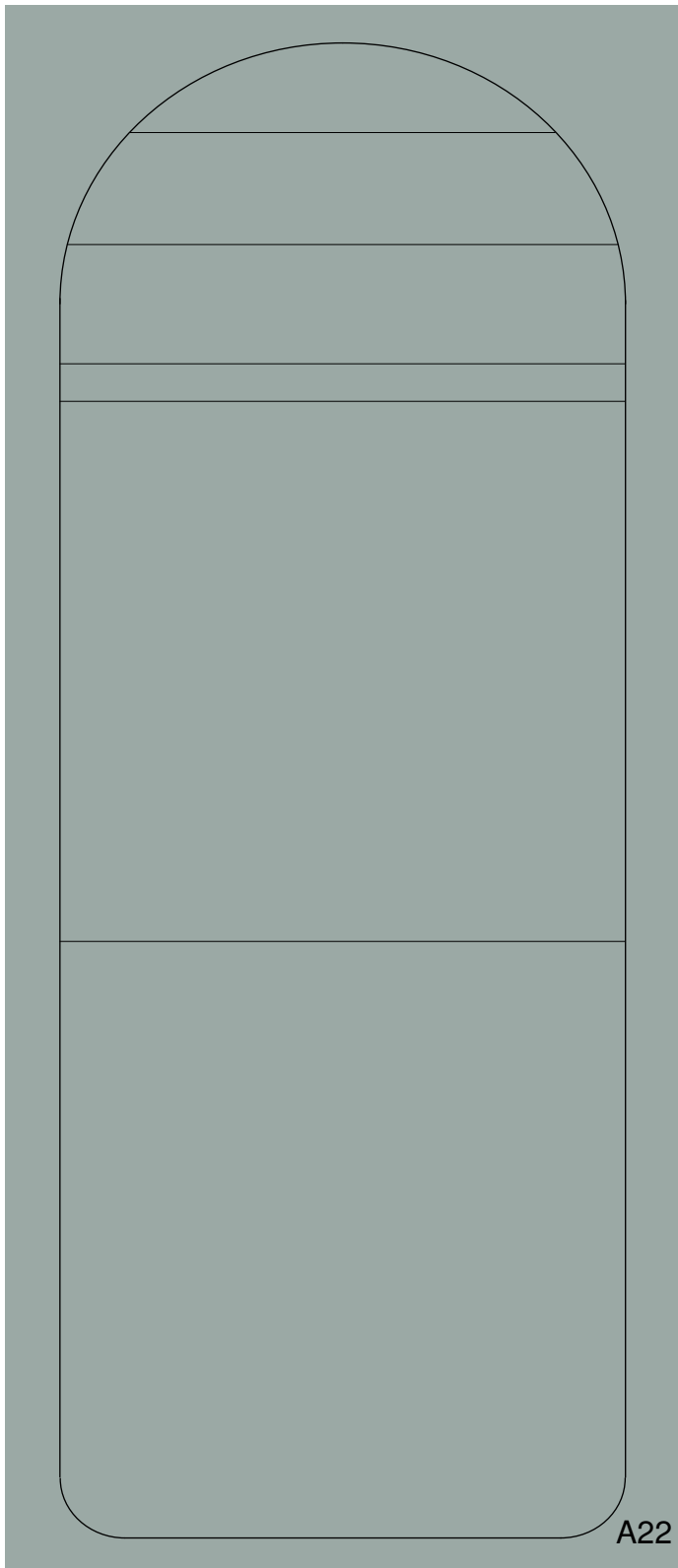
1 inch

CHIMP COUCH v.1 - PROJECT MERCURY

G. Buchmayer © 2007

page 4



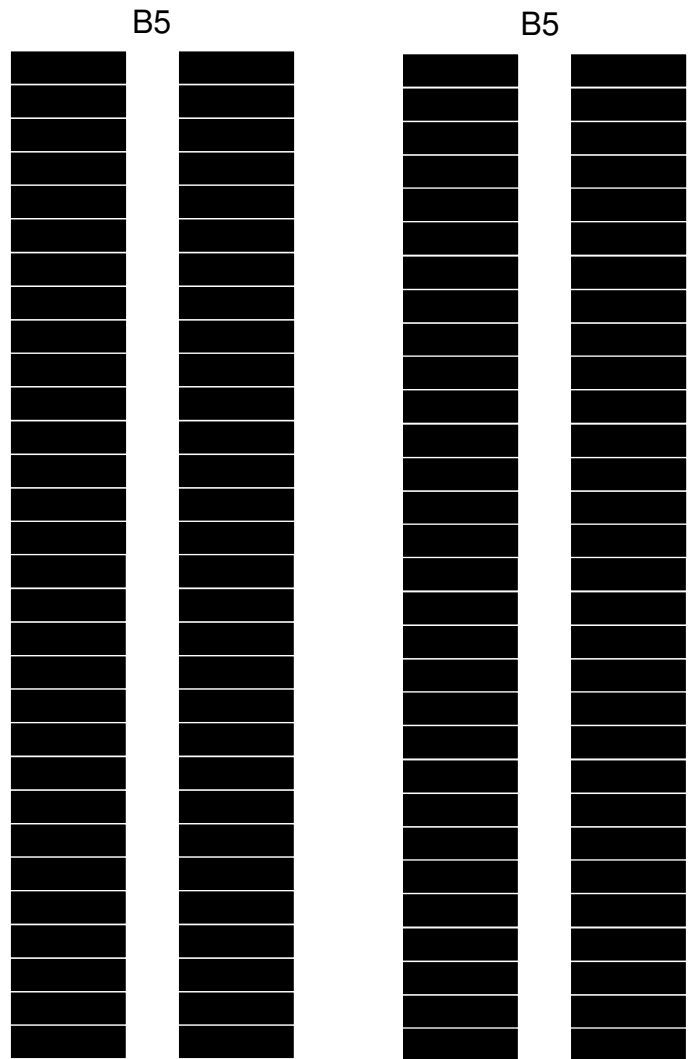
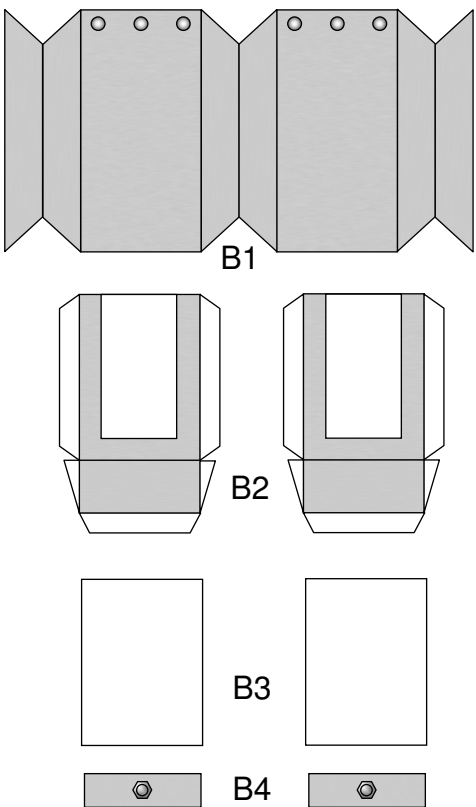
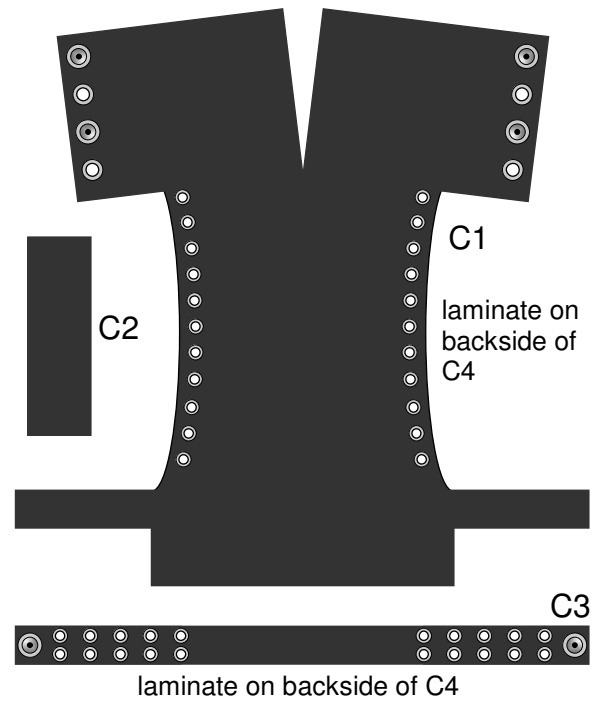
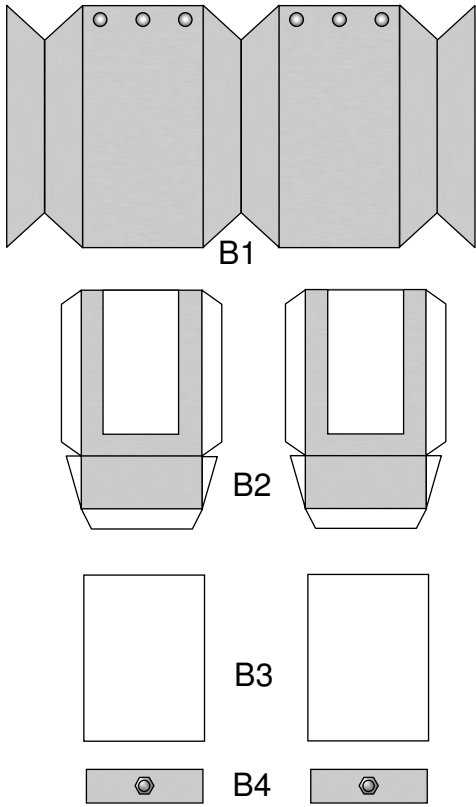


print on 160g paper glue to cardstock

1 cm

1 inch





print on 160g paper glue to cardstock

1 cm

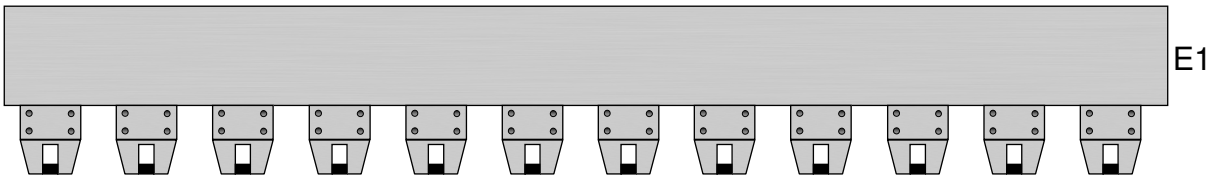
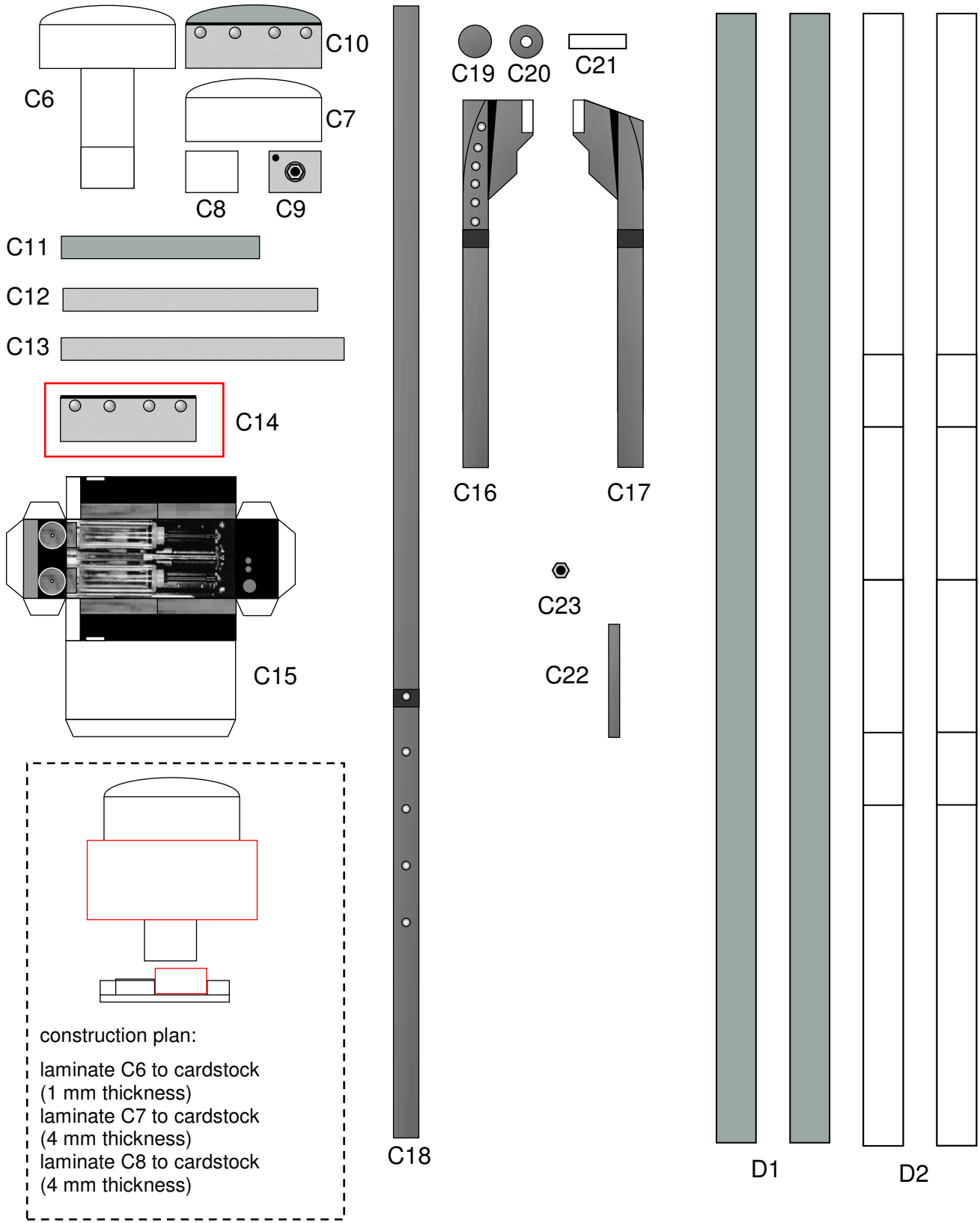
1 inch

CHIMP COUCH v.1 - PROJECT MERCURY

G. Buchmayer © 2007

page 6





print on 160g paper glue to cardstock

1 cm

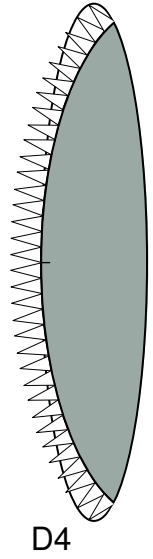
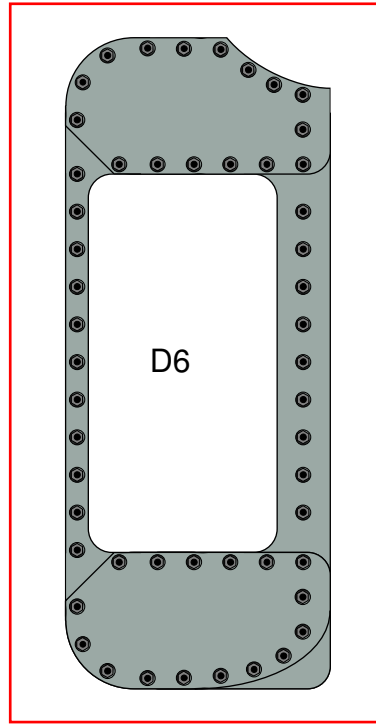
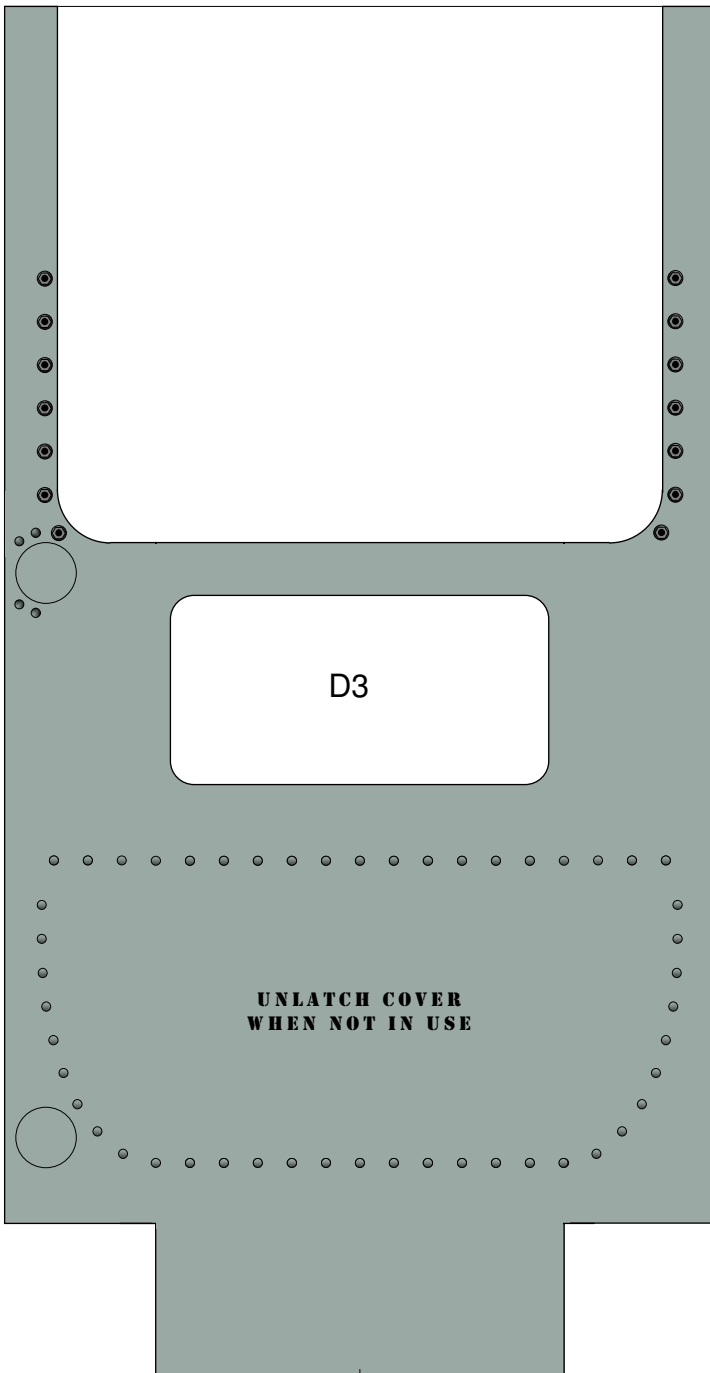
1 inch

CHIMP COUCH v.1 - PROJECT MERCURY

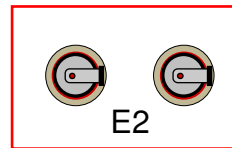
G. Buchmayer © 2007

page 7

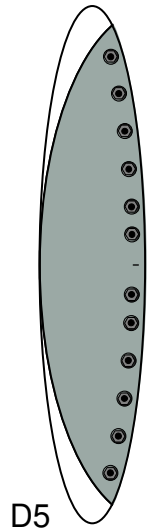




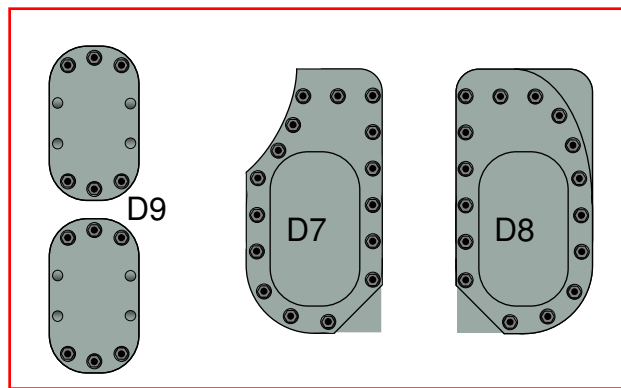
D4



E2



D5



D9

D7

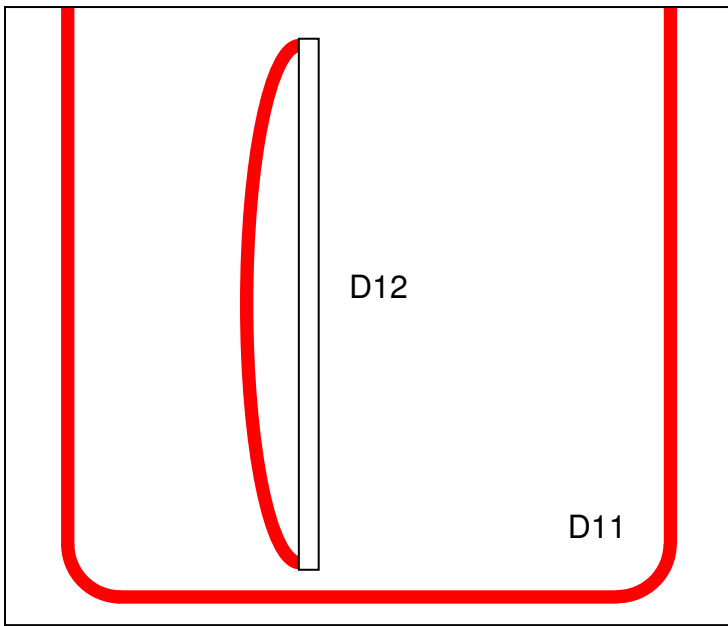
D8

print on 160g paper glue to cardstock

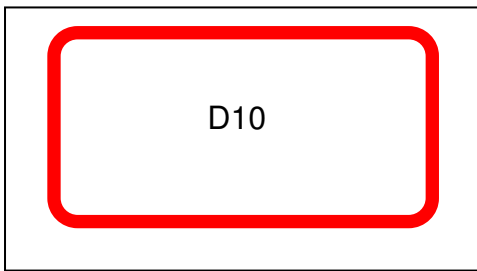
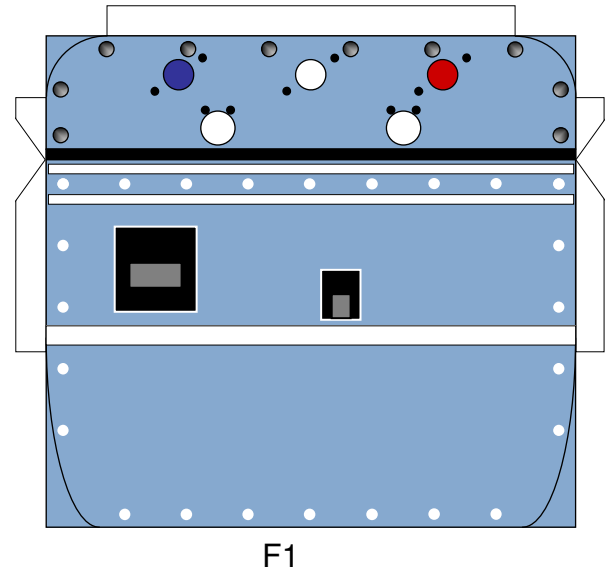
1 cm

1 inch

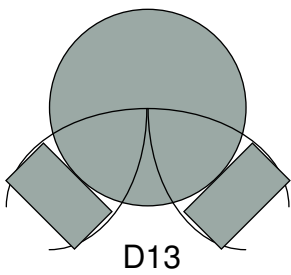
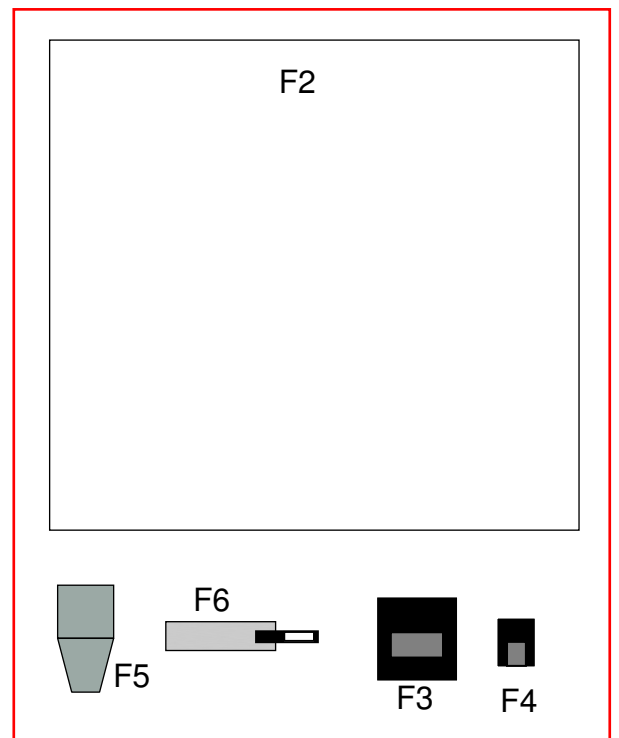




laminate on backside of D15



laminate on backside of D15



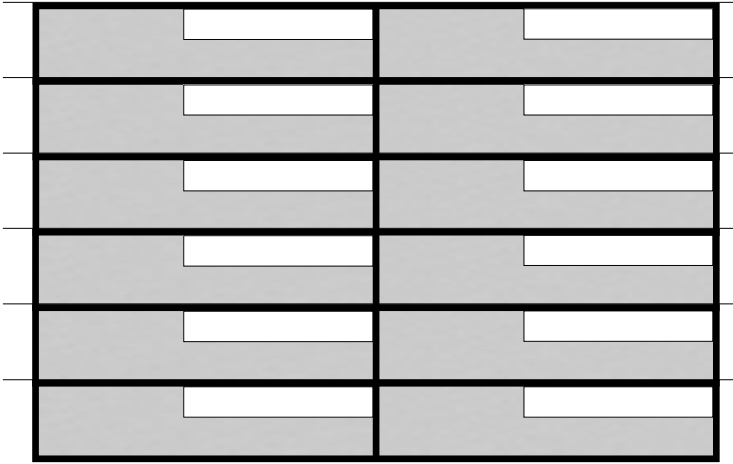
print on 160g paper glue to cardstock

1 cm

1 inch



roll around toothpick (12 parts) ●→



B8

roll around toothpick ●→

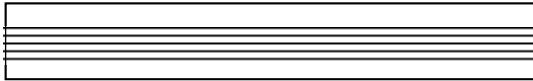
F7



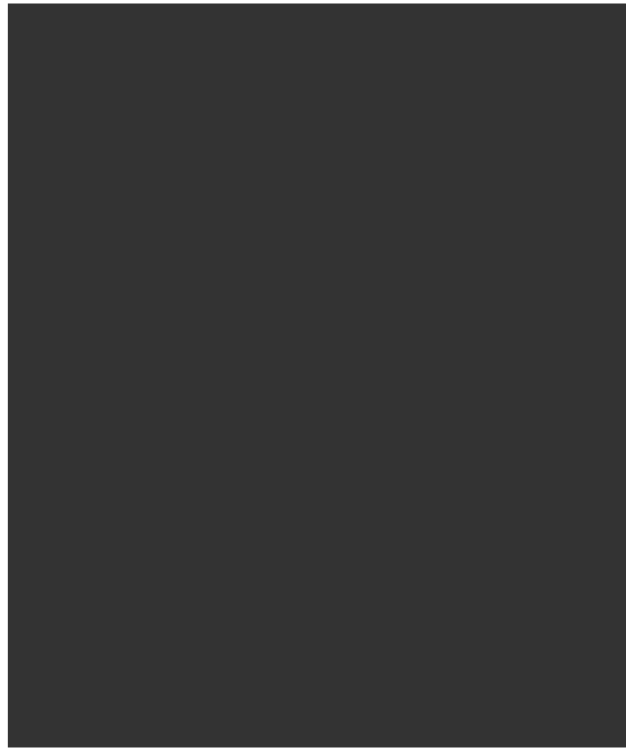
F9



F11



C4



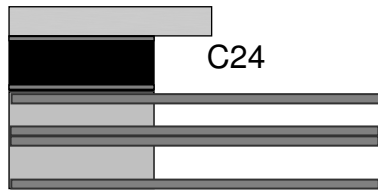
F8



F10



F12



C24

roll around toothpick ●→

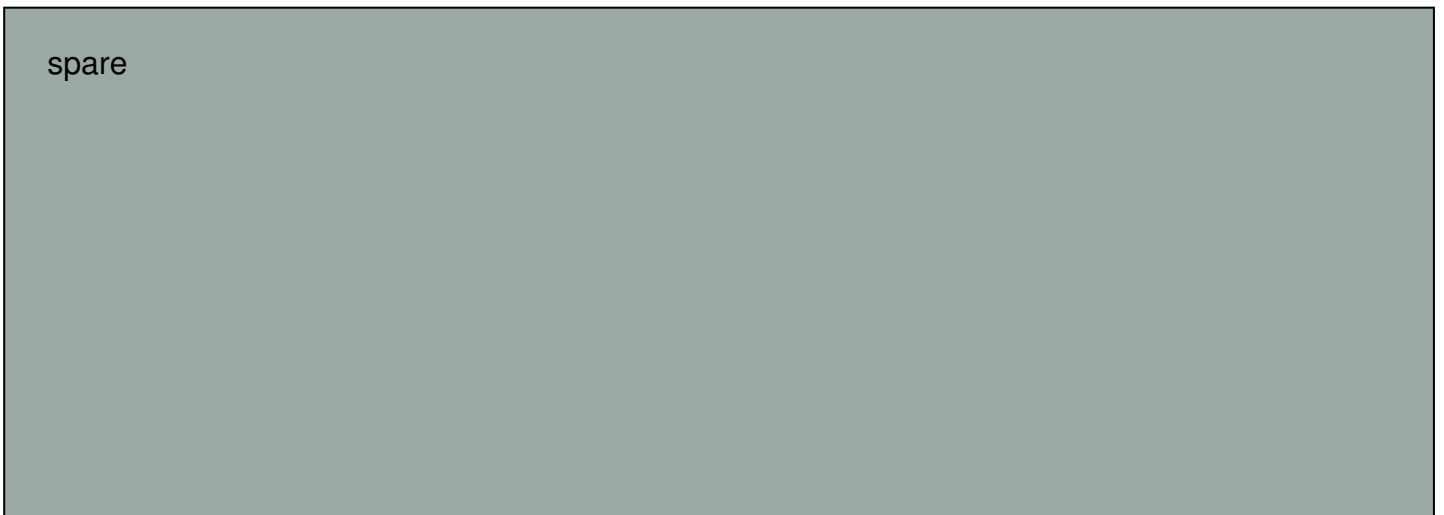


D14

C25



spare



print on 80g paper

1 cm

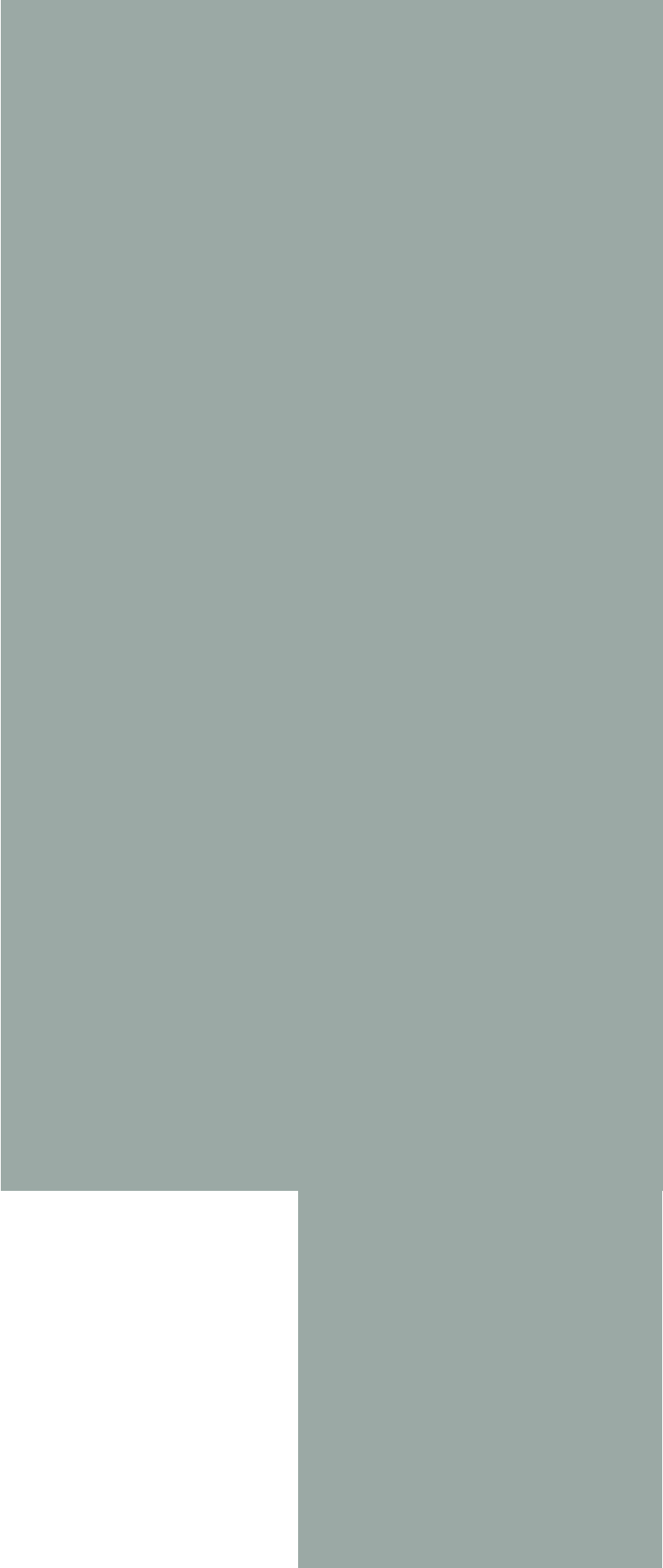
1 inch

CHIMP COUCH v.1 - PROJECT MERCURY

G. Buchmayer © 2007

page 10





print on backside of page 8 and 9

1 cm

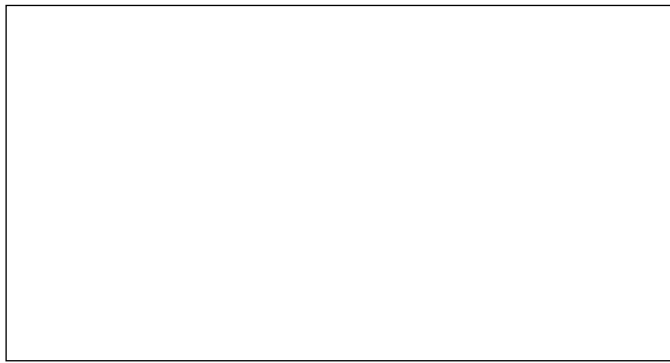
1 inch

CHIMP COUCH v.1 - PROJECT MERCURY

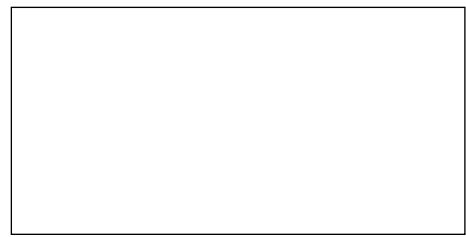
G. Buchmayer © 2007

page 11





G1



templates for cover windows (transparency)

Part list:

- A flight couch parts
- B flight couch external parts
- C flight couch internal parts
- D cover parts
- E cover external parts
- F cover internal parts
- G cover window templates

Instruction:

print pages 2 to 9 and page 14 on 160g paper
print page 10 on 80g paper
print page 11 on backside of page 8 and 9

Use 300g cardstock
Provide 8 toothpicks

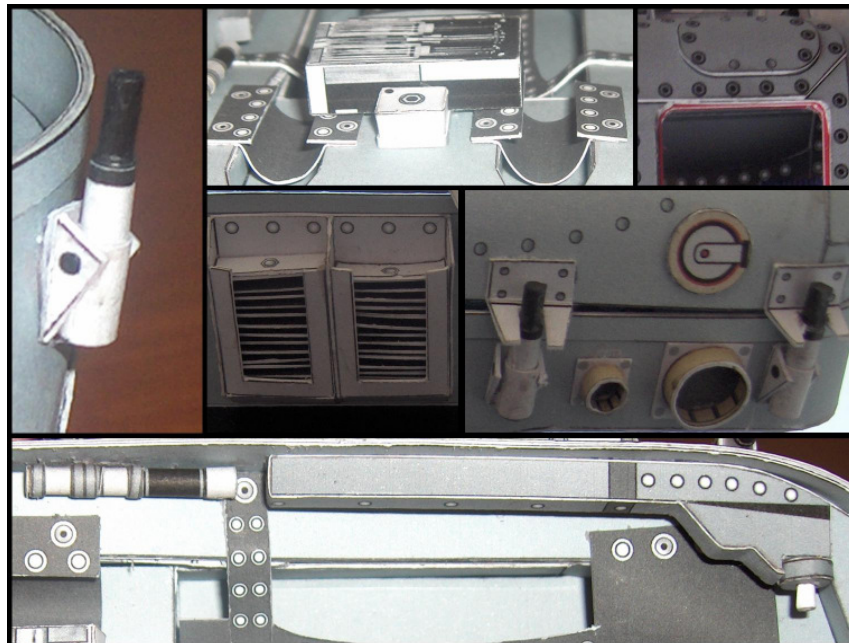
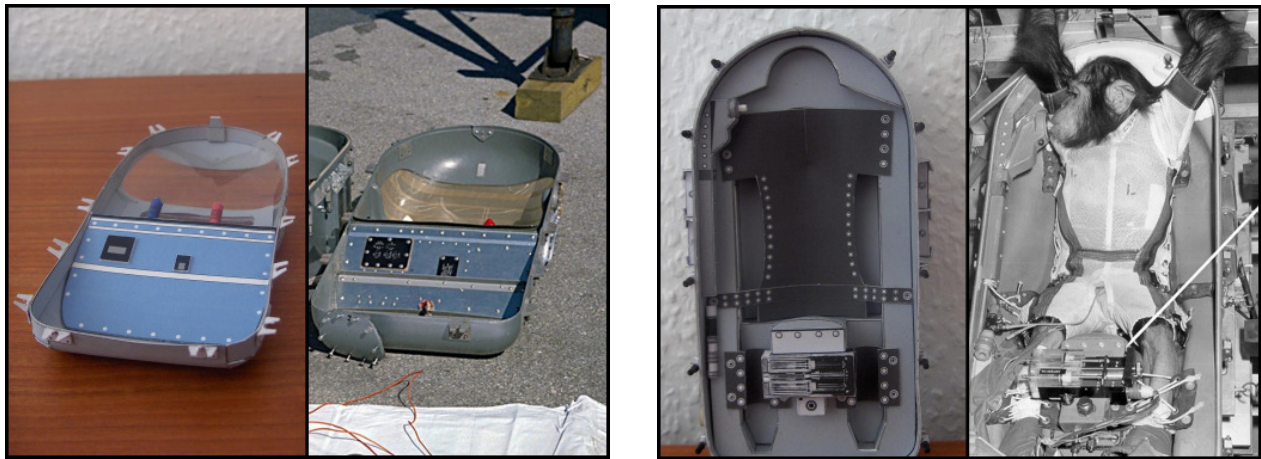
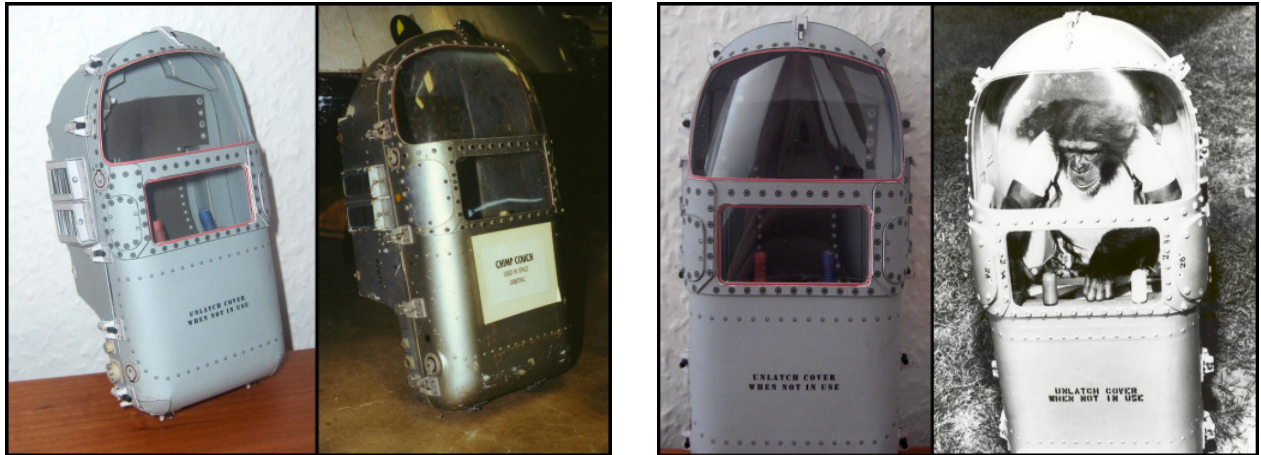
Two important hints for exact closing of the cover:
Avoid distortion of the cover.
Adjust parts E2 exactly opposite of the lock pins.

1 cm

1 inch



THE CHIMP COUCH PHOTOS



1 cm

1 inch

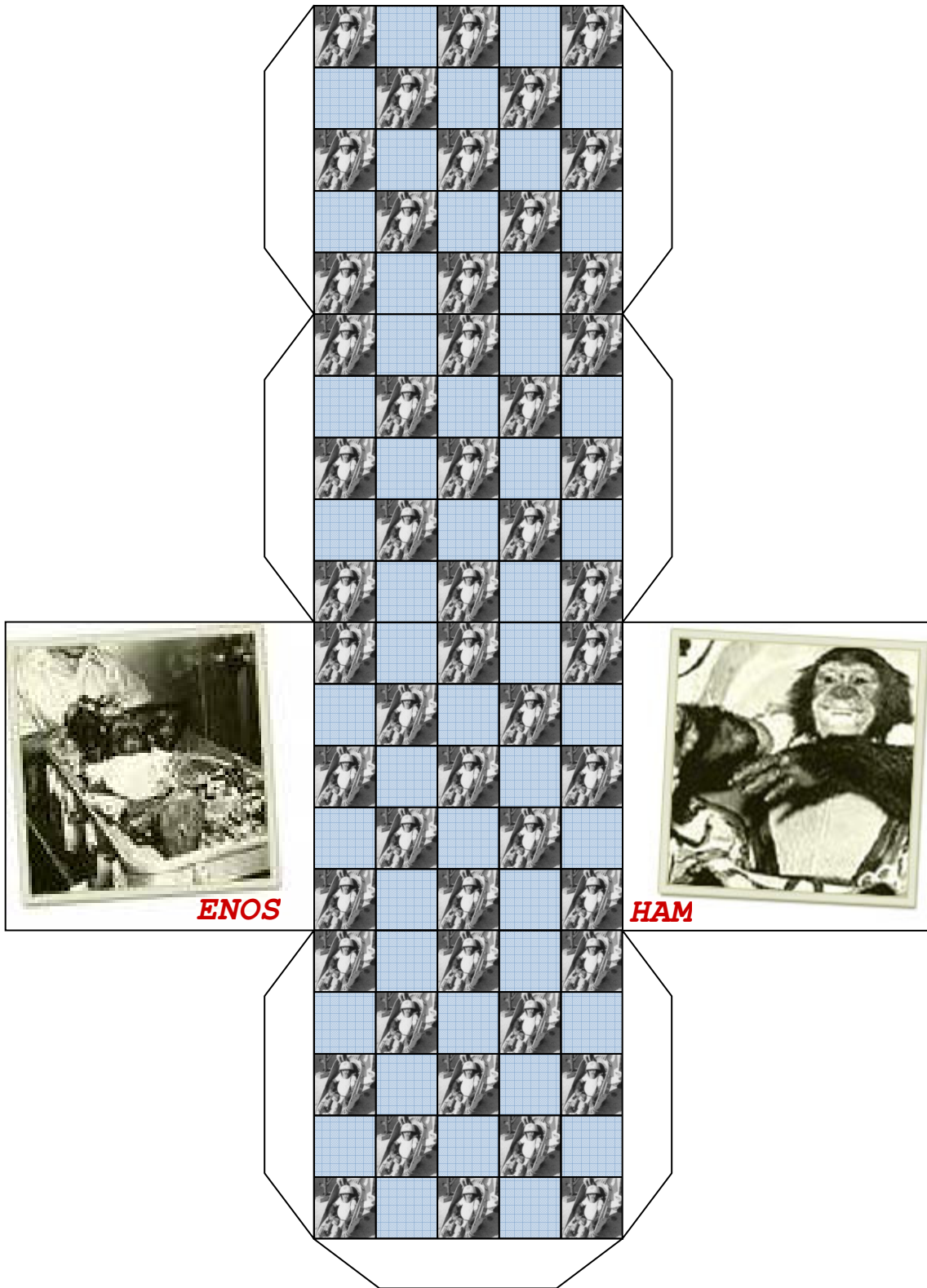
CHIMP COUCH v.1 - PROJECT MERCURY

G. Buchmayer © 2007

page 13



THE CHIMP COUCH CUBE



print on 160g paper

1 cm

1 inch

CHIMP COUCH v.1 - PROJECT MERCURY

G. Buchmayer © 2007

page 14

