



Apollo 7

11 – 22 October, 1968



Apollo 7 was the first manned mission in the Apollo program to be launched. It was an eleven-day Earth-orbital mission, the first manned launch of the Saturn IB launch vehicle, and the first three-man American space mission.

Crew:

Walter M. Schirra - Commander
 Donn F. Eisele - Command Module Pilot
 R. Walter Cunningham - Lunar Module Pilot

Flight:

The Apollo hardware and all mission operations worked without any significant problems, and the Service Propulsion System (SPS), the all-important engine that would place Apollo in and out of lunar orbit, made eight nearly perfect firings. The mission successfully proved the space-worthiness of the basic Apollo vehicle.

Goals for the mission included the first live television broadcast from an American spacecraft and testing the lunar module docking maneuver.

First orbit: perigee 231 km, apogee 297 km, period 89.78 min, inclination 31.63 deg., weight: CSM 14,781 kg.

The splashdown point was 27 deg 32 min N, 64 deg 04 min W, 200 nautical miles (370 km) SSW of Bermuda and 13 km (8 mi) north of the recovery ship USS Essex.

Apollo 7 was the only manned Apollo launch to take place from Cape Canaveral Air Force Station's Launch Complex 34, as all subsequent Apollo (including Apollo-Soyuz) and Skylab missions were launched from Launch Complex 39 at the nearby Kennedy Space Center.

Mission name	<i>Apollo 7</i>
Command Module	CM-101 mass 14,781 kg
Service Module	SM-101
Crew size	3
Booster	Saturn IB SA-205
Launch pad	LC-34 Cape Canaveral AFS Florida, USA
Launch date	11-Oct-68 15:02:45 UTC
Landing	22-Oct-68 11:11:48 UTC 27°32'N, 64°04'W
Mission duration	10 d 20 h 09 m 03 s
Number of orbits	163
Apogee	297 km
Perigee	231 km
Orbital period	89.78 m
Orbital inclination	31.63°

Special Thanks To:

Save the LUT
<http://savethelut.com>

Kip Teague, The Project Apollo Image Gallery
http://apolloarchive.com/apollo_gallery.html

Ton Noteboom

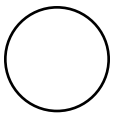
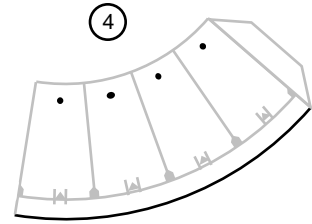
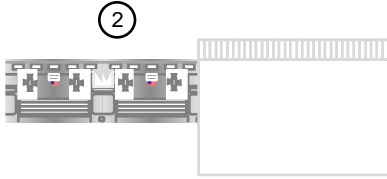
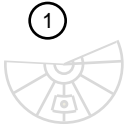
Wikipedia
http://en.wikipedia.org/wiki/Main_Page

And the wonderful folks at the Yahoo LUT Forum



Apollo Historical Series
Saturn 1B
Apollo 7 (SA-205)
1/480th Scale
Print to Bond Paper

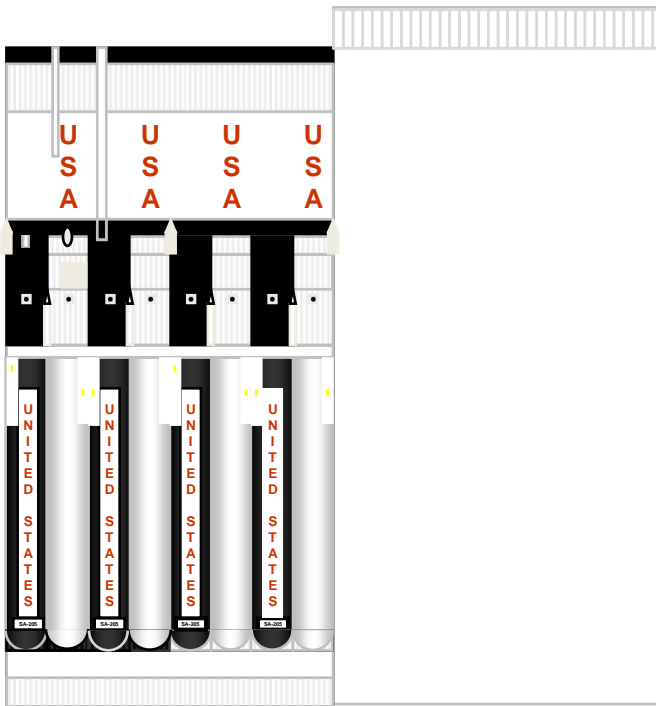
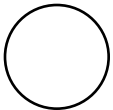
© 2010 Drawn by Michael Burke and
George Blanchette
This cardmodel is only for personal
and not commercial use.



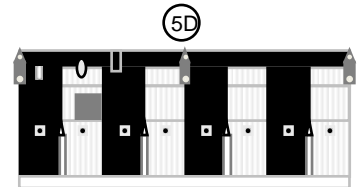
5B

Glue to
Cardstock

5B



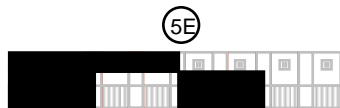
5A



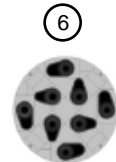
5D



7



5E



6



8A

8B