

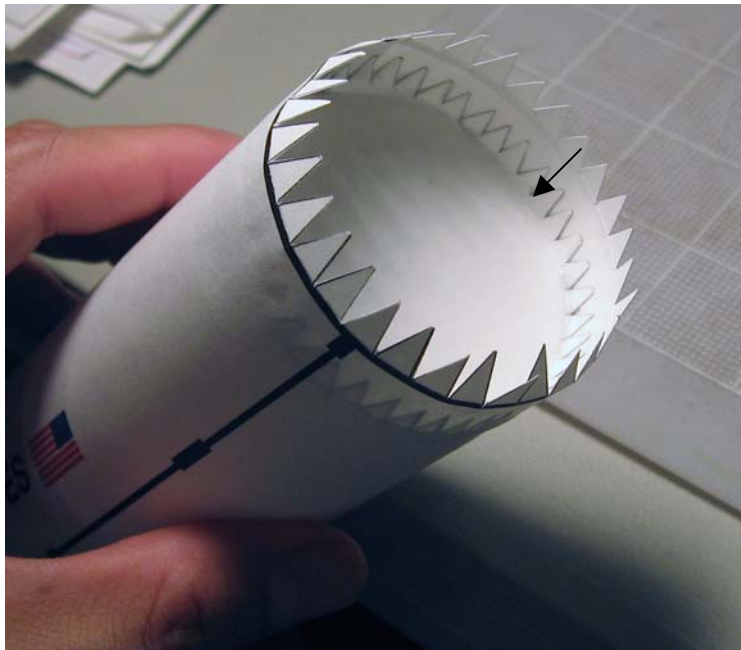


© 2009

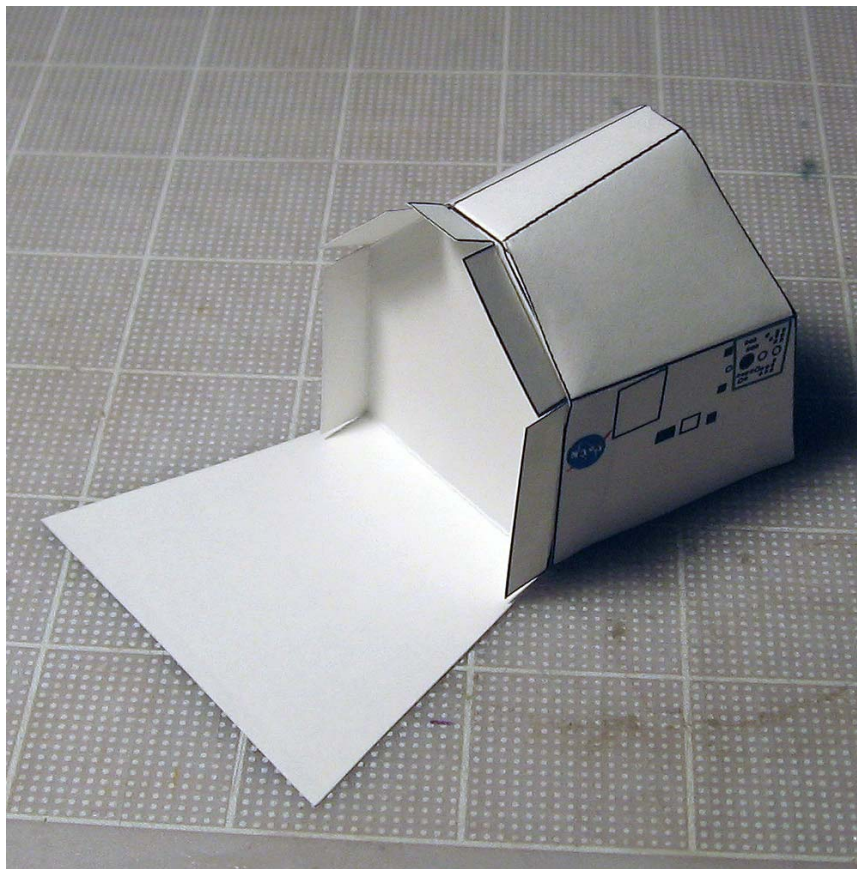
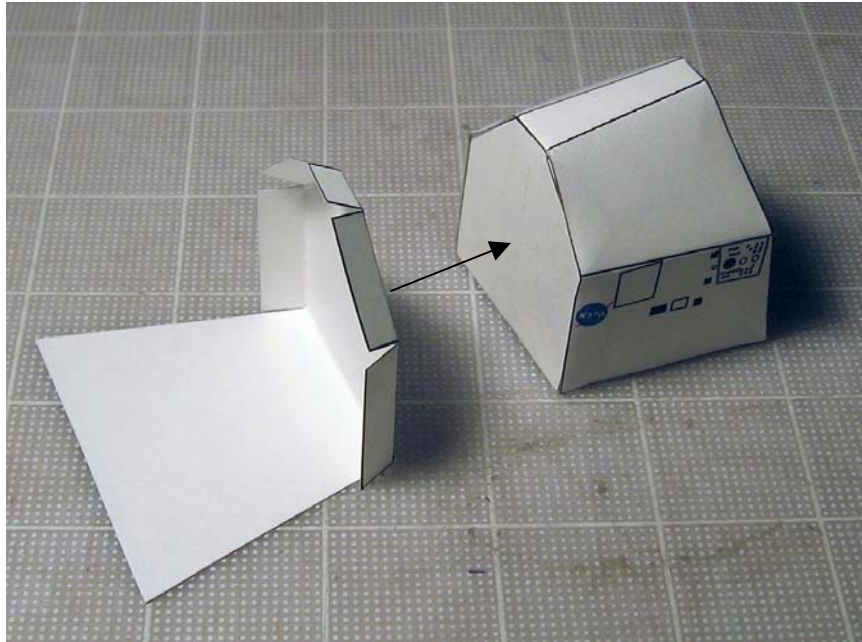
Assembly Instructions for the proposed Shuttle Derived Heavy Lift Launch Vehicle (HLLV)

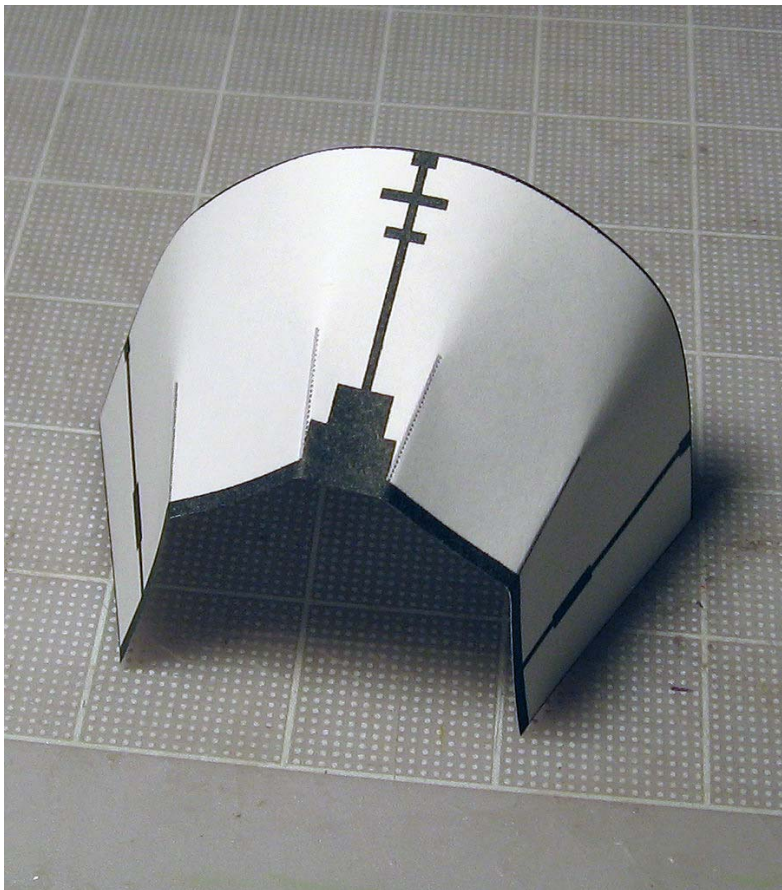
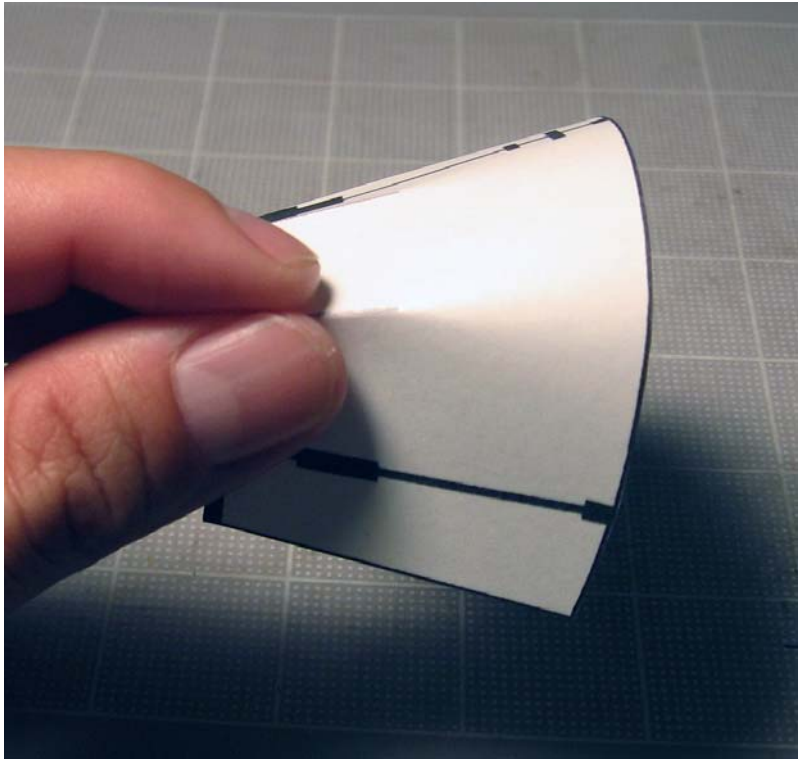


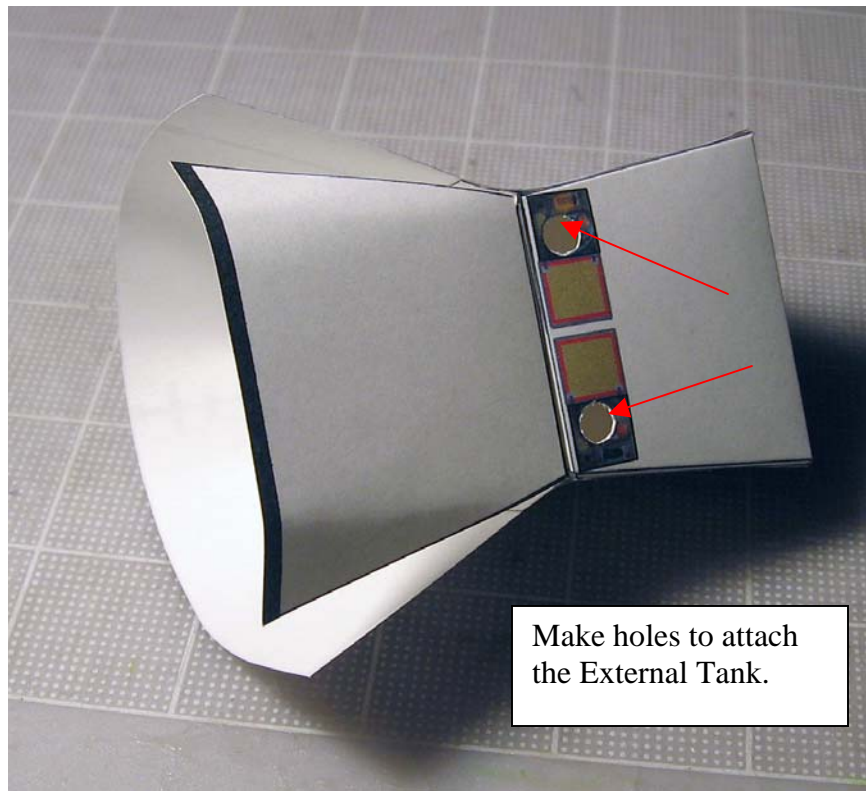
The Shuttle Derived HLLV is a proposed launch vehicle as a replacement for the Space Shuttle. Because it uses the Shuttle External Tank and Solid Rocket Boosters, this vehicle is to be considered seriously as an alternative to close the gap after the Space Shuttle is phased out. The vehicle consists of a Cargo container that is attached to the External Tank. To complete the assembly of this model, download the correspondent External Tank and SRB's from my site.



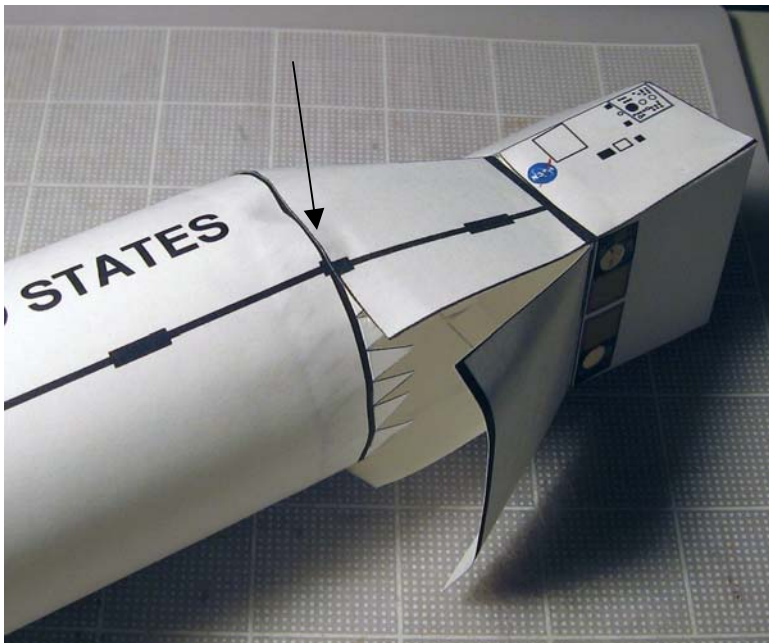
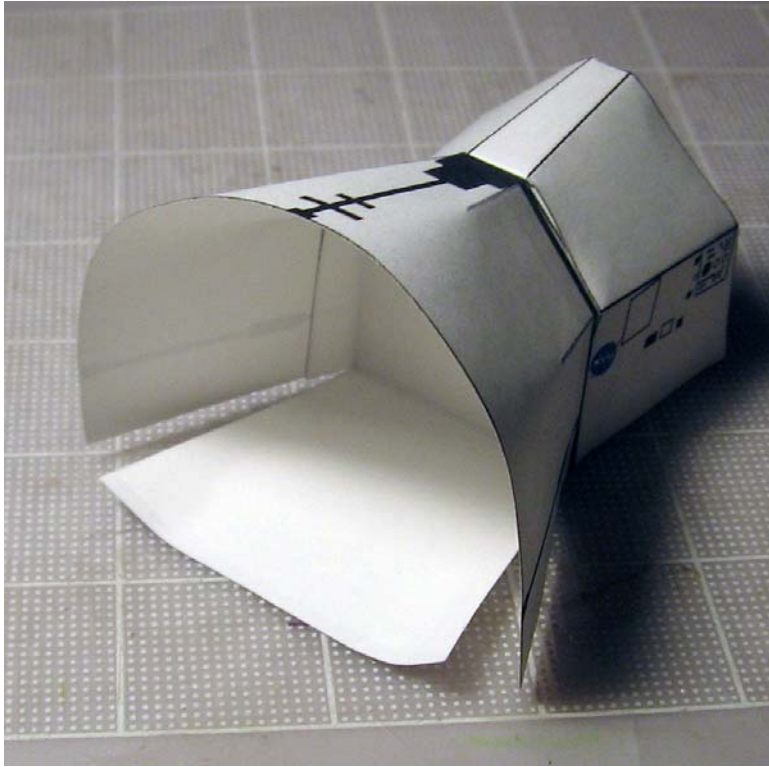
Glue the support circles approximately 10 mm deep to both ends of the cylinder.



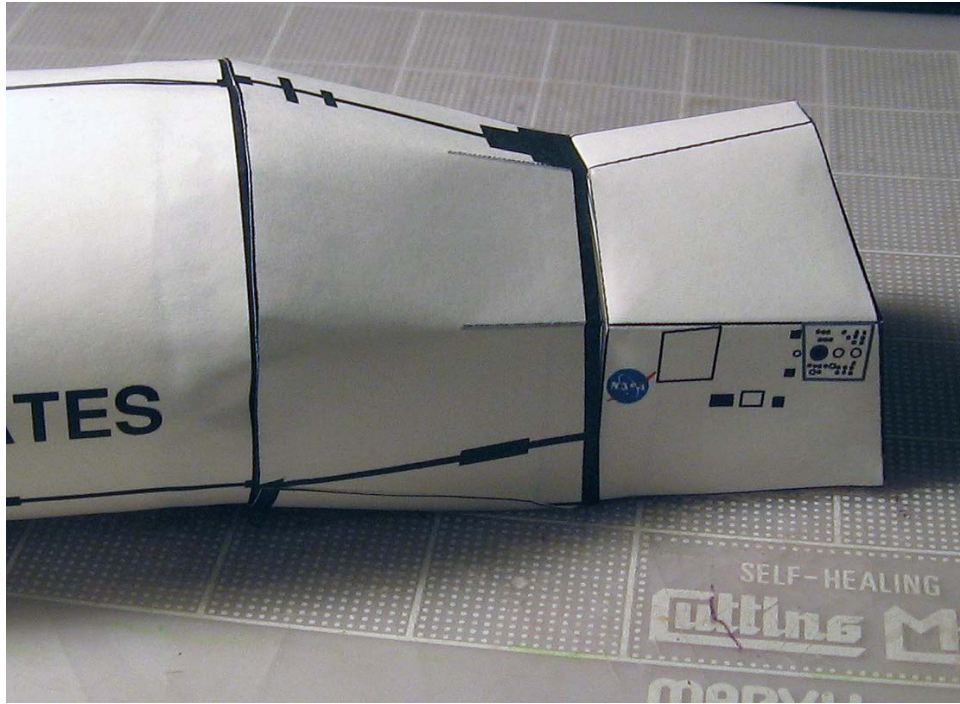




Make holes to attach
the External Tank.

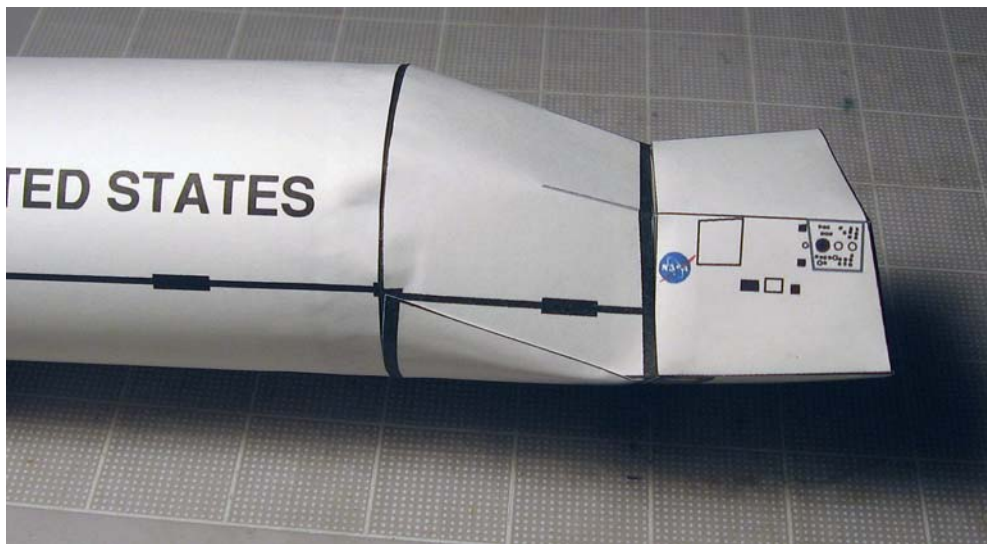
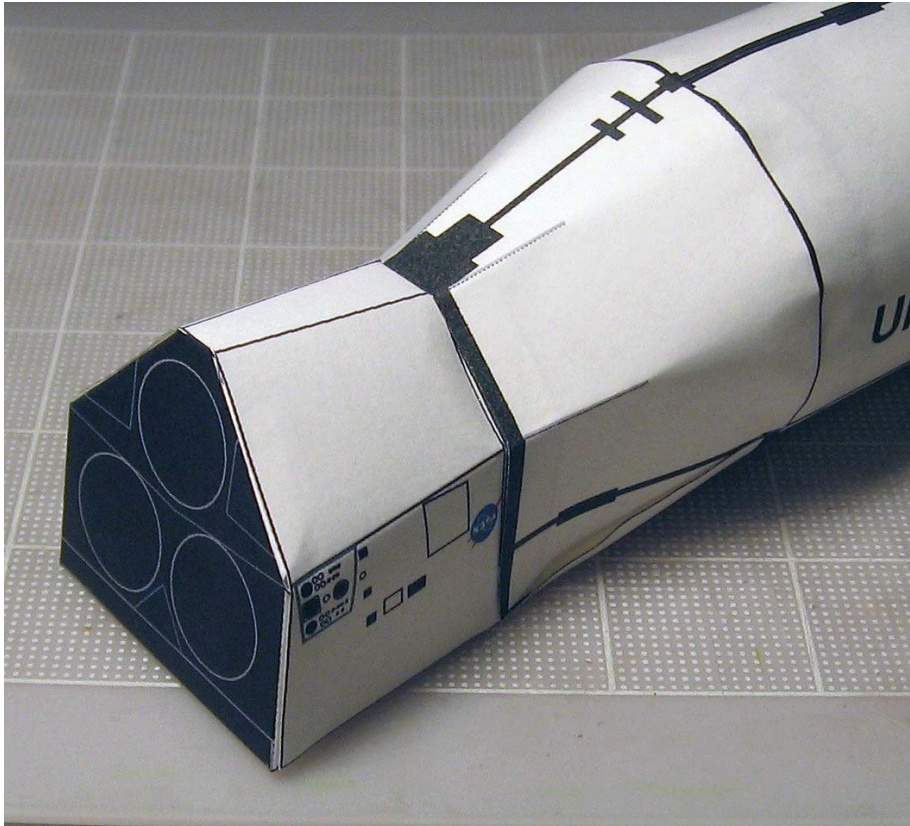


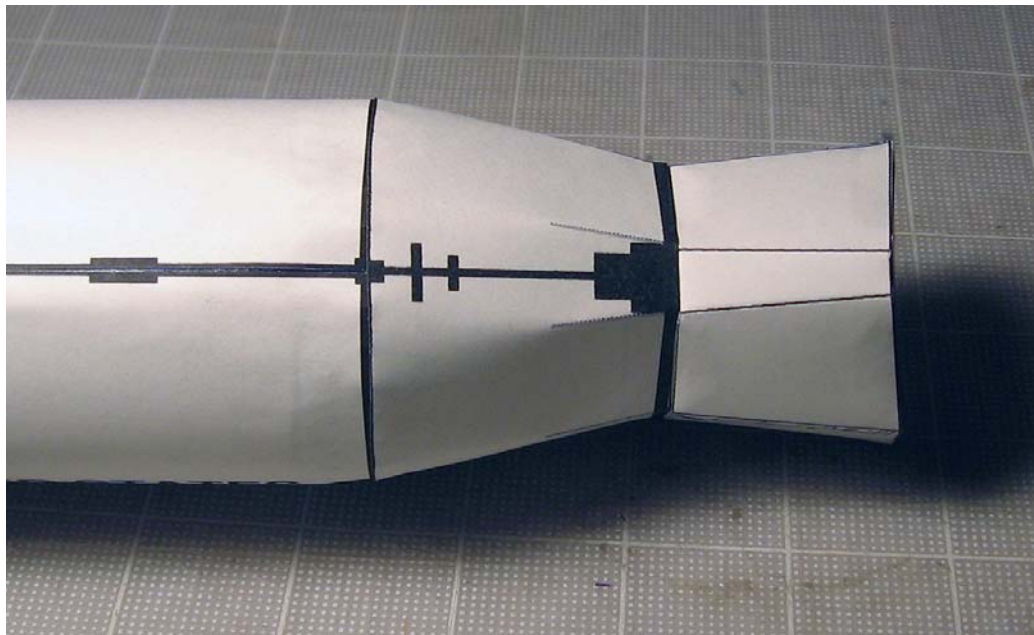
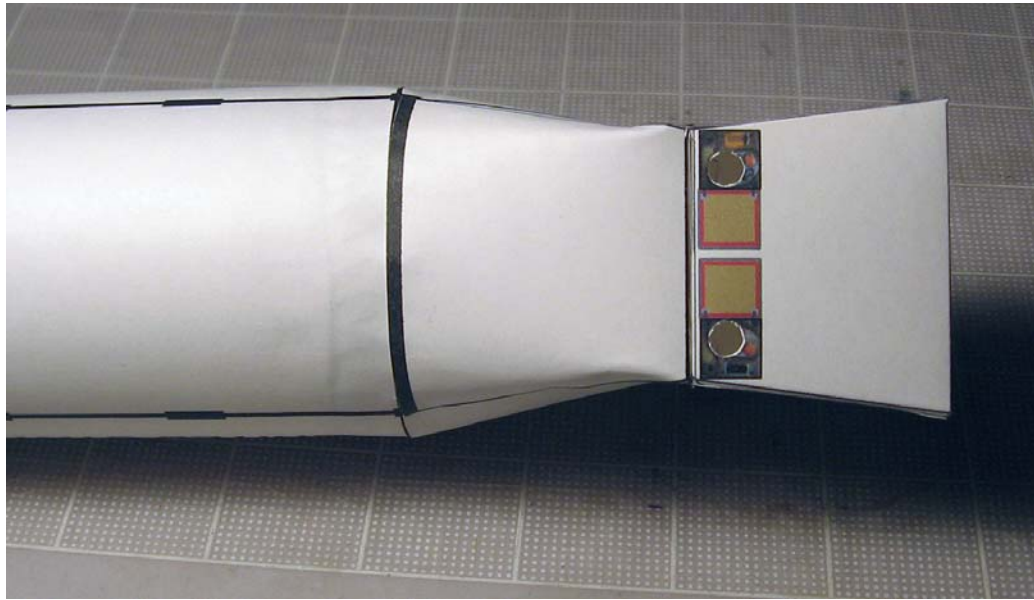
First glue the curved part to the end of the cylinder.

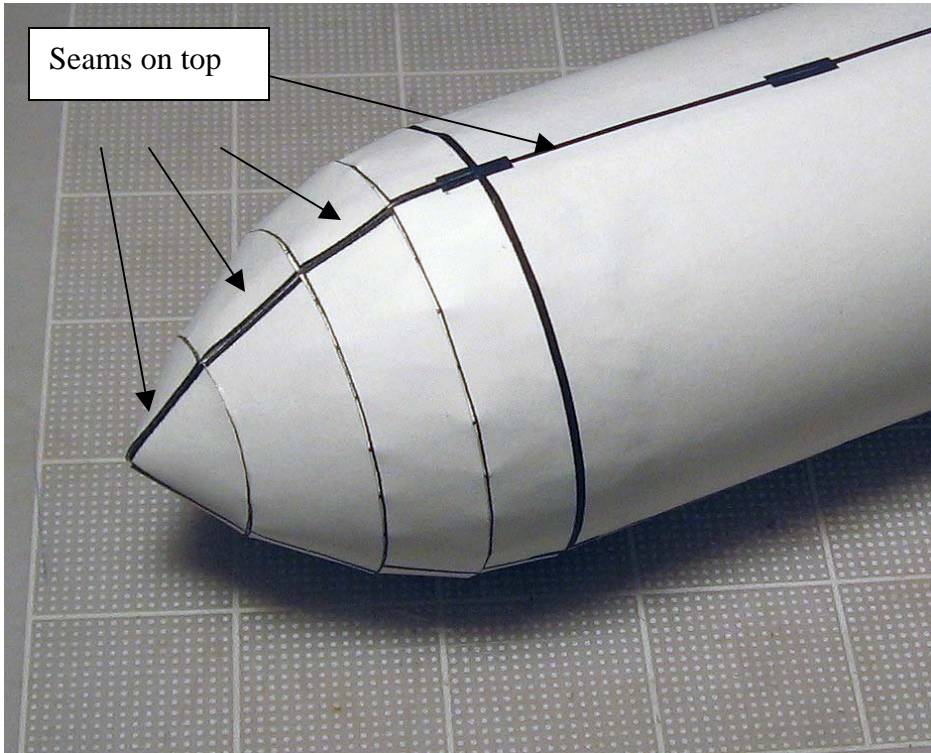
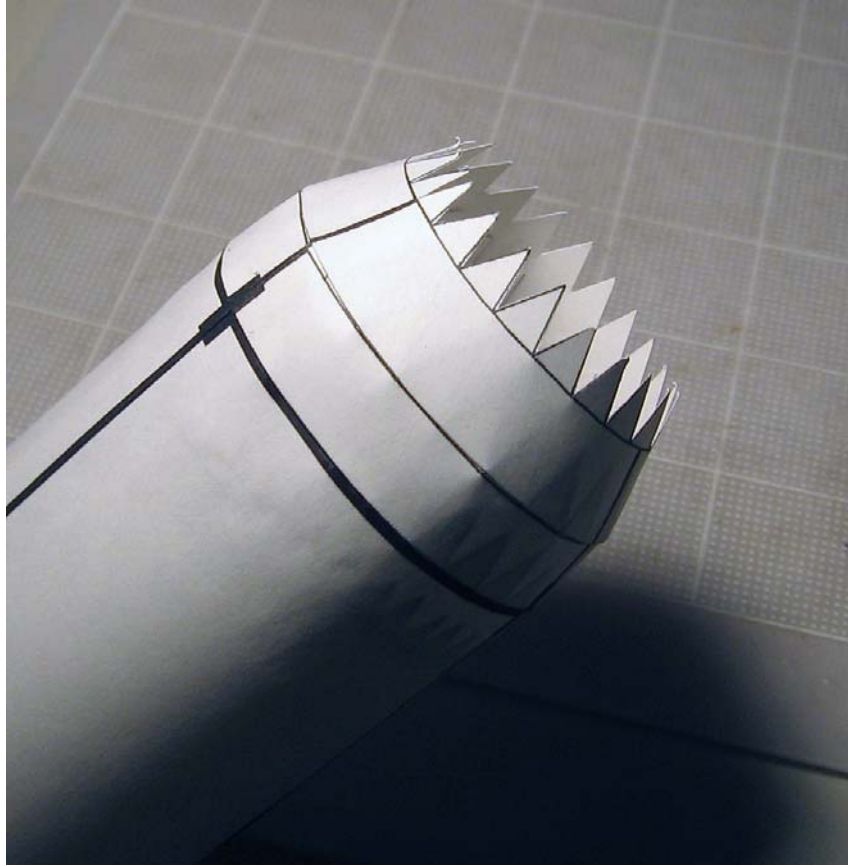


Then the flap is glued to cover the bottom portion of the cylinder.

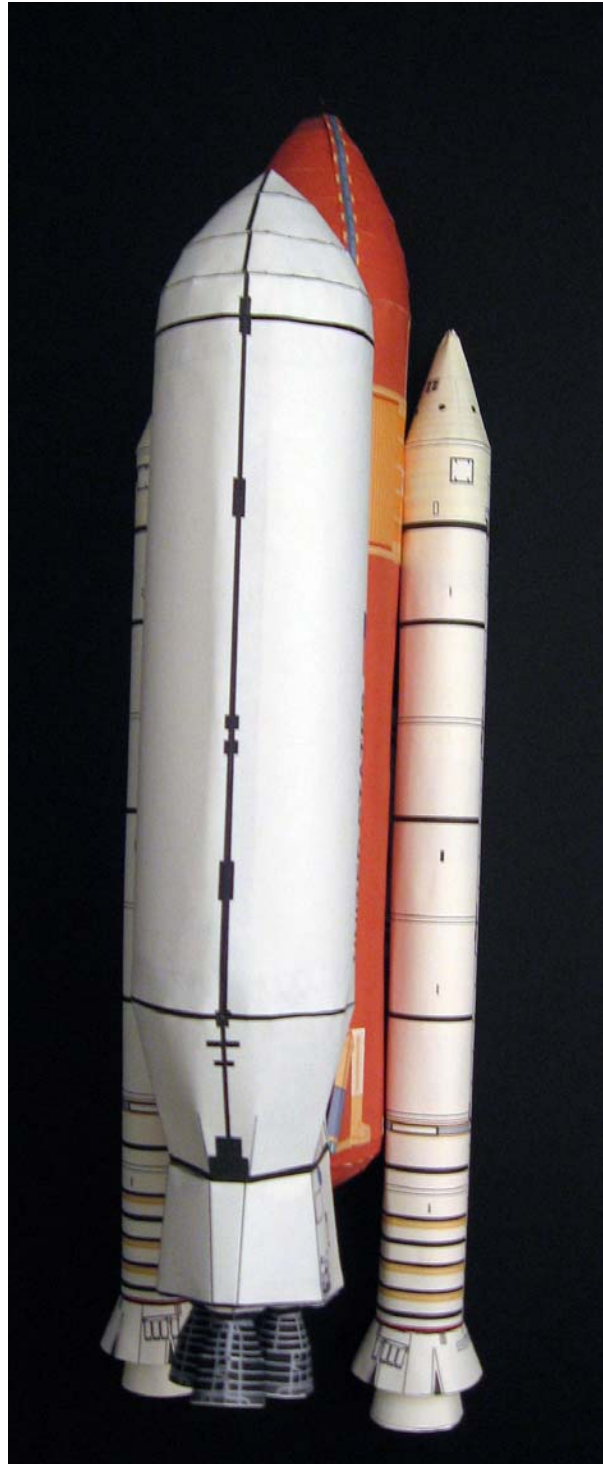












ENJOY!

www.axmpaperspacescalemodels.com